



‘ELECTIVE’ PROGRAM GUIDE FOR INTERNATIONAL MEDICAL STUDENTS

An essential component of undergraduate medical education globally is the ‘elective’ program which a medical student is required to pursue. Unlike other course components, it grants students the freedom to choose their focus area. Encouraging a diverse learning experience, students are often urged to explore healthcare in varied settings, with many opting for international exposure, outside of the host country. This elective serves as a valuable opportunity for students to broaden their perspectives and gain practical experience in different healthcare environments, enhancing their overall medical education and experiences.

Welcome to the Medical Elective Program at Symbiosis Medical College For Women (SMCW) & Symbiosis University Hospital & Research Centre(SUHRC)!

Our undergraduate elective program provides a unique opportunity for female medical students to witness the practical application of their knowledge. The program emphasizes independent learning, encompassing risk assessment, learning objectives, and ethical considerations. As a cornerstone of the medical school curriculum, our 900-bedded multispeciality tertiary care hospital opens its doors to female international students, offering a rich and immersive experience in healthcare in a safe and culturally diverse environment. Join us in fostering a global perspective, where learning transcends borders and medical expertise knows no limits.

This comprehensive guide provides details and addresses frequently asked questions to ensure a smooth and enriching experience during your elective in India.

Program Overview:

- Duration: 4 weeks / 6 weeks / 8 weeks / Period customized to individual student requirement. (Monday to Friday : Elective @ Hospital Placement;
Saturday: Non-Medical Elective @ SIU)
- Eligibility: Only Female Students in year 3 onwards of a 5-year degree program with prior clinical practice exposure or equivalent.
- The program is flexible based on students' needs and available facilities.

- Dates: Available year-round
- Intake : Up to 5 students per clinical specialty (as mentioned below), maximum 20 at a time.

Program Coordinator:

Dr. Neelesh Risbud

MBBS, MD, DGO, DNB, FRCOG (UK)

Professor & Head - Department of Obstetrics & Gynaecology, SMCW & SUHRC

Email: neesh.risbud@smcw.siu.edu.in | neeshrisbud@gmail.com

Tel/WA: +91 9890259343

Program Mentors:

- Dr. Rajiv Yeravdekar

Provost - Faculty of Medical & Health Sciences (FoMHS)

Symbiosis International University, Pune, India.

- Lt. Col. Dr. T. Vijaya Sagar

Dean - Symbiosis Medical College For Women (SMCW)

Symbiosis University Hospital & Research Centre(SUHRC) , Lavale, Pune.

Application Process:

- An applicant must write to the Program Coordinator {neesh.risbud@smcw.siu.edu.in} to receive complete details about the program.
- Applicants studying in a college not recognized by National Medical Council (NMC) must share the following with the Program coordinator:
 1. A completed NMC application form for Electives
 2. Receipt for a one-time payment to NMC equivalent to USD 100 for UG students and USD 200 for PG students.
 3. A recommendation letter from the Dean of her Home College
 4. A photocopy of her passport.
- On successful completion and submission of the application to the Program Coordinator, SMCW & SUHRC will forward the file to NMC along with an NOC letter from Dean SMCW & SUHRC.
- NMC will share their final NOC letter with the applicant and Cc : SMCW & SUHRC.
- On receiving approvals from the NMC and SMCW & SUHRC, the applicant must complete payments to SIU.
- She will then be connected to the Symbiosis Centre for International Education (SCIE) which will further assist her in all aspects including visa, travel, accommodation through-out her stay in India.

Elective Placements:

- Flexibility in creating a comprehensive program with rotations in Obstetrics & Gynaecology, General Medicine, General Surgery and Intensive Care
- Comprehensive observational clinical experience with expert supervisors (mentor-mentee model)
- Buddy system of peers

Specialities offered:

S.No	Department	Course work
1.	Obstetrics & Gynaecology Coordinator: Dr.Neelesh Risbud, MBBS, MD, DGO, DNB, FRCOG (UK). Prof. & HOD, Dept of Obstetrics & Gynaecology, SMCW & SUHRC	<ul style="list-style-type: none">- Students will take part in the daily ward rounds and can present the cases as part of the bedside tutorials.They will be encouraged to observe various gynecological surgeries .- Students will be attending delivery suites in daytime and out of hours as the case may be. They will be monitoring the progress of labor, perform auscultations and intrapartum monitoring.They can draw partograms, observe the delivery process and follow up women in the postnatal ward.It will be expected that they observe at least 5 spontaneous vaginal deliveries, 2 CS and 2 instrumental deliveries.- Students will maintain a Log book of clinic attendance,procedures observed, Labour cases and ward rounds.- At the end of the elective, students will be confident to elicit a comprehensive history in Obstetrics/ Gynaecology, perform Abdominal examination in pregnant women and abdo-pelvic examination in Gynaecology patients. They will also be observing cytological smears.Students can discuss the provisional diagnosis, order relevant investigations and arrange for follow ups.

2.	<p>General Medicine including subspecialties like Neurology, Cardiology and Gastroenterology.</p> <p>Coordinator: Dr. Rajesh Karekar, MBBS, MD, PGDGM. Prof. & HOD, Dept of Medicine, SMCW-SUHRC</p>	<ul style="list-style-type: none"> - Activities to be undertaken: Outpatient clinics in Cardiology, Internal Medicine, Neurology and Gastroenterology. - Observe Outpatient procedures like OGD scopies - Ward rounds. - History and physical examinations in clinics and in patients. - Order relevant investigations, present bedside tutorials and monitor the progress of patients. - Observe procedures like urinary catheterisations, phlebotomies, IV cannulations, Nasogastric tube insertion, chest drains etc.
3.	<p>General Surgery</p> <p>Coordinator : Dr.Pankaj Bansode, MBBS, MS, FICS, FIAGES E-FIAGES. Prof. & HOD, Dept of Surgery, SMCW & SUHRC</p>	<p>Attend outpatient clinics in General surgery,Urology,Neuro and Orthopaedics.</p> <ul style="list-style-type: none"> - Observe Outpatient procedures like OGD scopies,catheterisations, suturing etc. - Attend Ward rounds with consultants . - History taking and physical examinations in clinics and in the wards. - Order relevant investigations, present cases as bedside clinics and monitor the progress of patients. - Observe various Open and Laparoscopic surgeries in operation theaters.
4 .	<p>Intensive care</p> <p>Coordinator : Dr.Urvi Shukla MBBS, MD, MRCA(UK), EDIC, Consultant in charge, ICU & Emergency services, SMCW-SUHRC</p>	<ul style="list-style-type: none"> - Observe ICU protocols and management - Order investigations and follow ups - Observe and assist in various procedures in intensive care. - Observe procedures like ABG, intubations etc under supervision - Attend theaters and observe various anesthetic procedures. - Assist in monitoring intra op and post op patients. - Be a part of team for Daily rounds in ICU

Symbiosis Community Outreach and Extension (SCOPE) Note on SYMBIOSIS COMMUNITY OUTREACH PROGRAMME & EXTENSION (SCOPE).pdf	Visit to District Hospital Visit to Urban Health Training Centre (UHTC) Visit to Rural Health Training Centre (RHTC) Visit to Infectious Disease Hospital Visit to National Aids Research Institute (NARI) Visit to Old Age Homes, Orphanages / Child adoption centers Visit to Center for Supportive and Rehabilitative Care including De-addiction centers
--	--

- **Costs:**

We currently offer 2 packages as follows :

Package	Days
Package A : 4 weeks of Hospital Placements + 2 visits to PHC/Rural Centres + Accommodation at Sandipani, 3 meals, airport pick up and drop (Pune/Mumbai only), travel from Sandipani to SUHRC, FRO process, orientation program + 4 days of non-medical experiential learning at various SIU institutes of your choice	Monday - Saturday
Package B: 4 weeks of Hospital Placements + 2 visits to PHC/Rural Centres	Monday - Friday

- Fee structure for the program will be available on request.

Academic Engagement:

- Attendance at classroom lectures, tutorials, multidisciplinary team (MDT) meetings, symposia, and conferences.
- Exposure to undergraduate teaching for local students.

Non-Medical and Cultural Experiential Learning:

- 20 non-medical electives conducted on Saturdays by constituents of Symbiosis International University.
- Students can choose electives to visit institutes of their choice.

Bouquet of Student Elective

Visa Assistance:

- Guidance on obtaining a student visa, assistance with required documentation and other forms of support will be provided by SCIE.

Orientation:

- In-person orientation sessions on arrival.
- Information on local customs, emergency procedures, and support services.
- Guidance on cultural norms and respectful engagement.

Language Requirements:

- English is the primary language of instruction.
- However, knowing the local language Marathi/Hindi may help in better conversation. Language support is available.

Accommodation and Meals:

- Available on Campus at the Sandipani Hometel on a single/double occupancy basis.
- Assistance will be provided by SCIE.

Health - Safety - Support and Assistance:

- Safe and secure campus with 24x7 CCTV surveillance.
- Dedicated program coordinator for inquiries at SCIE and SMCW & SUHRC
- 24/7 emergency contact for support
- Access to necessary healthcare facilities in case of emergencies (paid services)

Other facilities offered :

- Free Wifi access provided on Campus
- Free Library and reading room access provided during designated hours of operation.

Evaluation and Certification:

- Regular evaluations during clinical rotations.
- Certificate of completion provided at the end of the program.

About SYMBIOSIS INTERNATIONAL UNIVERSITY www.siu.edu.in

Symbiosis was established by Prof. (Dr.) S. B. Mujumdar in 1971 with the motto of 'Vasudhaiva Kutumbakam' – the World is one Family, and has been providing quality education from KG to Ph.D.

SIU offers programmes in multiple faculties including

- Law
- Management
- Computer Studies
- Medical & Health Sciences
- Media & Communication
- Humanities & Social Sciences
- Engineering
- Architecture & Design



Today, Symbiosis has over 46,000 students from all the states of India and from over 85 countries, providing a home away from home for Indian and foreign students.

Symbiosis International University is committed towards generation of knowledge, innovations and the advancement of new generation healthcare delivery. The University has been awarded Category-I status by UGC, and an 'A++' grade by National Assessment and Accreditation Council (NAAC). Internationally, QS World University Rankings has ranked SIU amongst the top 351- 400 in QS Asia University Rankings 2023. The Times Higher Education (THE) World University Ranking 2023 has ranked SIU amongst the top 1000 Universities in the World, and 23rd in India.

The main campus of the University is nestled on a beautiful 400-acre land at Lavale in Pune, Maharashtra, India. Today the University has 40 constituents, 11 Research Centres, 10 Support Departments and 10 Departments of Skills & Continuing Education spread across Pune, Nasik, Nagpur, Bengaluru, Hyderabad and NOIDA.

The **Academics Department of Symbiosis International University (SIU)** was formed in 2002 when Symbiosis became a deemed-to-be university. Over the last 20 years, the Academics Department has evolved into a body playing an important role in pursuing academic excellence across all programmes (Post Graduate, Undergraduate, Diploma, Certificate) offered at SIU.

It plays a pivotal role in formulating academic policies for the smooth and efficient delivery of academic programmes to fulfill the university's mission of quality education, knowledge generation, and dissemination. It coordinates academic activities across different constituents of the university, and plays an important role in ensuring compliance with the relevant rules and regulations of the University Grants Commission (UGC) and other relevant governing agencies.

About the FACULTY OF MEDICAL & HEALTH SCIENCES (FOMHS)



FoMHS is a constituent of the prestigious Symbiosis International University (SIU). FoMHS has conceptualized & implemented a group of unique, innovative and career oriented capacity building programmes meant to raise a cadre of healthcare professionals who would ensure delivery of optimum health care services.

Institutes under FoMHS:

- 1) Symbiosis Institute of Health Sciences (SIHS): www.sihspune.org : 2005
- 2) Symbiosis College of Nursing (SCON): www.scon.edu.in : 2007
- 3) Symbiosis School of Biological Sciences (SSBS): www.ssbs.edu.in : 2011
- 4) Symbiosis Community Outreach Programme & Extension (SCOPE):
<https://siu.edu.in/Health-Facilities.php> : 2012
- 5) Symbiosis Centre for Health Skills (SCHS) : www.schs.edu.in : 2015
- 6) Symbiosis Centre for Emotional Wellbeing (SCEW): www.scew.edu.in : 2018
- 7) Symbiosis School for Online and Digital Learning (SSODL): www.ssodl.edu.in : 2019
- 8) Symbiosis Medical College for Women (SMCW): www.smcw.edu.in : 2019
- 9) Symbiosis University Hospital & Research Centre (SUHRC): www.suhrc.edu.in : 2019

About SYMBIOSIS MEDICAL COLLEGE FOR WOMEN (SMCW)

www.smcw.edu.in

The Symbiosis Medical College for Women is the brainchild of the Founder and Chancellor of the Symbiosis International University, Prof. Dr. S. B. Mujumdar. With an objective of women empowerment and contributing to the requirement of more women doctors, Symbiosis has this exclusive college under its Faculty of Medical & Health Sciences. SMCW is the first Medical College in the country to offer free medical education!

The faculty at SMCW and SUHRC has been drawn from the best across the country. SMCW thus endeavours to produce caring, compassionate and ethical female doctors.



About SYMBIOSIS UNIVERSITY HOSPITAL & RESEARCH CENTRE (SUHRC)

www.symbiosisuniversityhospital.com

SUHRC is the teaching hospital attached to SMCW. SUHRC is currently a 900 bedded tertiary care hospital. The hospital has all the departments required for a teaching hospital, complete with state of the art infrastructure, equipment and facilities for technology enabled teaching and



training. All theaters are 'modular' with 2-way data transfer facilities. The SUHRC provides top-quality clinical services, which are protocol-driven and evidence based. Ethics with transparency of operations are accorded topmost priority. The hospital caters to the population in a radius between 25 - 50 KM from SUHRC. It also provides healthcare services to the large community of students and faculty currently residing at the University campus (around 4000).

About Symbiosis Centre for International Education (SCIE)

<https://www.scie.ac.in/>

SCIE is a dedicated centre to promote and ensure Internationalisation of all initiatives including SIU programmes and all its campuses. Its International Promotions & Admissions, Student Events & Relations, and International Initiatives and Collaborations Teams work strategically to achieve these goals and offer a truly international ecosystem for students and faculty.

Committed to building global networks of like-minded individuals and organisations, and promoting research and academic excellence, SCIE also manages the unique Symbiosis Centre for India Australia Studies (SCIAS), Symbiosis Centre for European Studies (SCES), and the Symbiosis Centre for Research in Internationalisation of Higher Research. Its Centre for Engagement with Africa (SCEA) focuses on capacity building in Africa, especially through the many scholarships and freeships SIU offers under its 'Engage with Africa' initiative.

Three Facets of Internationalisation @ SIU :

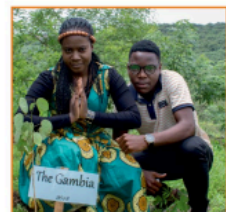
• Teaching-Learning and Evaluation:

1) Student/ faculty mobility, COIL , co-creation of courses, co- teaching, FDPs, Semester abroad-Credit transfer to and from Foreign Universities through Global immersion programme (GIP)

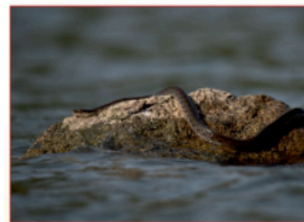
2) SIU - Deakin Hub

• Joint International Research projects: Erasmus+, DAAD, UKIERI, GCRF, USIEF, Asia Foundation, SPARC

• Collaboration for Extension activities: SIMC and Salisbury University – USA, SSLA and Bournemouth University – UK, SSLA and DePaul University – USA, SSBF and Universitat Pompeu Fabra - Barcelona.



About Symbiosis Lavale Campus



Symbiosis - Lavale campus is rich in scenic ambience, spread across 350 acres having biodiversity in nature with two bandharas (water storage reservoirs) of total storage capacity of about 30,00,000 liters of freshwater and home to more than 191 species of birds, butterflies, reptiles, amphibians and mammals. The University has developed three butterfly gardens and saplings of more than 200 food plants and nectar plants. Around 40 species of butterflies and many types of moth species are seen on the campus.

About Sandipani Hometel

<https://sandipanihometel.com/>

Sandipani Hometel is one of the best places in West Pune with our Leadership Development Centre, a premium residential training facility. Located in the picturesque setting on a hilltop amidst lush green mountains at Lavale. It is part of Symbiosis International University campus. We have a total of 98 fully furnished comfortable rooms. All rooms are equipped with a Television set with DTH, Tea/Coffee Maker, Mini Fridge and Air Conditioning etc. In house we have two restaurants: Mkahawa Cafe Multi Cuisine All Day Dining and Cibo Bello Pizza Restaurant.



-----XX-----