



STUDY INDIA PROGRAM

(Elective Program Guide for International Medical Students)

Preamble:

An essential component of undergraduate medical education globally is the ‘elective’ program which a medical student is required to pursue. Unlike other course components, it grants students the freedom to choose their focus area. Encouraging a diverse learning experience, students are often urged to explore healthcare in varied settings, with many opting for international exposure, outside of the home country. This elective serves as a valuable opportunity for students to broaden their perspectives and gain practical experience in different healthcare environments, enhancing their overall medical education and experiences.

Welcome to the ‘Study India Program (SIP)’ for international medical students organized by Symbiosis Centre for International Education (SCIE) for Symbiosis Medical College for Women (SMCW) & Symbiosis University Hospital & Research Centre (SUHRC), Symbiosis International University (SIU).

Our Study India Program (SIP) provides a unique opportunity for female (only) medical undergraduate students to witness the practical application of their knowledge, emphasizing a holistic understanding of global health issues and concerns, Indian healthcare practices and processes, independent learning, encompassing risk assessment, learning objectives, and ethical considerations.

SIP is an intensive customized program offering international students an unparalleled opportunity of combining academics (theory) with practical workshops and diverse cultural activities. Along with the academic modules, field visits to various healthcare establishments, visits to non-governmental and nonprofit organizations, cultural trips, workshops on various community led health promotion initiatives and cultural immersion events are included in the program.

This SIP is built comprehensively around our SMCW & SUHRC. As a cornerstone of the medical school curriculum, our 900-bedded multi specialty tertiary care hospital, the SUHRC, opens its doors to female international students, offering a rich and immersive experience in healthcare in a safe and culturally diverse environment. Join us in fostering a global perspective, where learning transcends borders and medical expertise knows no limits.

This comprehensive guide provides details and addresses, frequently asked questions (FAQs) to ensure a smooth and enriching experience during your elective at Symbiosis International University (SIU), India.

USPs of the SIP for International Medical Students at SIU:

1. Institutional Prestige

Symbiosis International (Deemed University) is globally ranked (641-650) recognized for academic excellence and international collaborations by QS Global ranking and ranked 601–800 th Medical and Health by the Times Higher Education World University Rankings 2025. Placed globally at #31 in the QS rankings in terms of employer reputation is testament of our career and profession ready education. A World-Class academic infrastructure, bolstered by a 900+ bedded teaching hospital, ensures a comprehensive, culturally enriching and academically rewarding experience, uniquely tailored for international medical students.

2. Academic Excellence

Mentorship from experienced healthcare professionals with international accolades.

Access to the Symbiosis Centre for Research & Innovation for collaborative research and publications.

Opportunity to participate in conferences, symposiums, and workshops during the elective.

3. Comprehensive Clinical Exposure

Opportunity to interact with an abundant number of outpatient and in-patient cases at the SUHRC which is equipped with cutting-edge, diagnostic and therapeutic facilities. The SUHRC is accredited by the National Accreditation Board for Hospital & Healthcare Providers (NABH) & National Accreditation Board of Laboratories (NABL)

Observation and participation in a wide spectrum of medical specialties, including diseases endemic to India and certain rare diseases.

Exposure to basic and advanced procedures and interventions.

Experience shadowing/working across primary, secondary, and tertiary healthcare systems in India.

4. Value-Added Learning Opportunities beyond healthcare

Exposure to inter/trans/multi disciplinary learning

Learning resource optimization and innovative solutions for low-resource settings.

Various capacity building initiatives in both healthcare and non healthcare domains

5. Global Networking

Interaction with students from diverse international backgrounds, fostering multicultural peer learning and collaboration.

Certificate of Completion and transcript to facilitate career progression.

6. Cultural Immersion

Exposure to India's diverse socio-economic, cultural, and linguistic backgrounds.

Opportunities to engage in Indian festivals, cuisine, yoga sessions, and local sightseeing in Pune—a vibrant cultural hub.

Integration of modern and traditional healthcare practices, including Ayurveda, Yoga, and complementary therapies.

7. Campus Safety and Facilities

Robust safety and security measures of a gated community, including 24-hour security, CCTV monitoring, women's safety protocols, disaster management protocols etc.

Implementation of comprehensive protocols specific to healthcare professionals such as needle-stick injury management, post exposure prophylaxis (including vaccination protocols).

Comprehensive recreation and wellness facilities including sports centers, a gymnasium, aerobic studio, yoga-shala, swimming pool etc.

Availability of support units such as grocery stores, salons, parlors etc offering essential services on campus.

A serene, lush green, biodiverse campus, amidst picturesque and mountainous surroundings offering an ideal peaceful study environment.

8. Support for International Students

End to end: doorstep to doorstep services to facilitate a smooth and pleasant SIP.

24-hour availability of emergency medical services @ SUHRC.

Dedicated helpline for parents/guardians for a continuous and ongoing accessibility (9.00am to 5.00pm IST). Guidance on acclimatization and cultural sensitization.

9. Strategic Location

Pune, a city well connected with all major cities in the country, is rich in history and cultural heritage.

Availability of modern conveniences like shopping malls and other entertainment options,

Proximity to various historical spots and recreational opportunities.

10. Affordability and Value for Money

Globally valued and competitive program.

Overview:

This guide outlines the process for female international medical students applying for the SIP at the SIU

Schedule (timing of the year and duration of the SIP) will be as per availability communicated by Faculty I/C Internationalization, Faculty of Medical & Health Sciences (FoMHS), SIU

Applicants may opt for an SIP of 4 / 6 / 8 weeks or a period, customized to individual student requirements.

Eligibility:

Only female medical students in their 3rd year and onwards of a 5-year Medical degree program with prior clinical practice/exposure, or equivalent, are eligible to enroll for the SIP.

Eligibility documents required:

1. Bonafide certificate from a recognized university / medical college
2. NOC from the Head/Dean of the institution on the official letterhead
3. Letter of Recommendation from an appropriate academic head ascertaining the academic eligibility of the applicant
4. A copy of valid passport (with front and back page), with minimum 6 months' validity from the date of completion of the proposed SIP

Pre-requisites: It is mandatory for the candidate

- To be resident on campus, in the twin sharing accommodation in the faculty quarters.
- To have basic proficiency in English which will be the primary language of instruction.
- To sign a [letter of undertaking](#), promising [adherence to the campus code of discipline](#) (statutory as per SIU)
- To undertake at least one academic elective throughout a 4 week SIP. This may change for increasing duration of SIP selected.
- To maintain medical elective log book ([Link](#)): This well structured log book for medical elective ensures that international medical students will be able to document their learning experiences, clinical exposures and skills gained during their elective. It also serves as a tool for assessment and feedback.

Fees:

Application Fees @ 100 USD (Non Refundable) ,

+

SIP	Program Coverage	Total Fees in USD
Package A - 4 weeks	4 weeks of academic / hospital sessions + 2 visits to Primary Healthcare Centre /Rural Health Centres + 4 days of non-medical experiential learning at various SIU institutes of your choice at SIU Lavale campus + twin sharing accommodation on campus + 4 meals a day on campus + airport pick up and drop (Pune/Mumbai Airport only) + FRRO process + orientation program + Primary Healthcare and Medical Insurance*	3000
Program	Program Coverage	Total Fees in USD
Package B - 6 weeks	6 weeks of academic / hospital sessions + 3 visits to Primary Healthcare Centre /Rural Health Centres + 6 days of non-medical experiential learning at various SIU institutes of your choice at SIU Lavale campus + Twin Sharing Accommodation on campus + 4 meals a day on campus + airport pick up and drop (Pune/Mumbai Airport only) + FRRO process + orientation program + Primary Healthcare and Medical Insurance*	4500
Program	Program Coverage	Total Fees in USD
Package C - 8 weeks	8 weeks of academic / hospital sessions + 4 visits to Primary Healthcare Centre /Rural Health Centres + 8 days of non-medical experiential learning at various SIU institutes of your choice at SIU Lavale campus + Twin Sharing Accommodation on campus + 4 meals a day on campus + airport pick up and drop (Pune/Mumbai Airport only) + FRRO process + orientation program +Primary Healthcare and Medical Insurance*	6000

Application Process:

1. Initial Contact:

- The applicant may access the website of SMCW www.smcw.edu.in and the tab on International Students/the tab on Study India Program at www.scie.ac.in . She should send an email furnishing basic information ([Link](#)) and SIP (duration and choice of non-medical elective) desired, to the SIP Coordinator, SCIE (head_internationalmobility@scie.ac.in) for further details.
- SCIE will connect the student to the Officer I/C Internationalization, FoMHS for updated program details and eligibility details.
- The Officer I/C Internationalization, FoMHS shares program details, eligibility criteria, SIP slot availability, etc. keeping SCIE in cc.
- The student/applicant should then submit her application along with a [Letter of Recommendation](#) from the Head/Dean of her parent institute and a photocopy of her Passport indicating her intention to pursue the SIP at SIU with the requisite information as per her individual requirements. This should be accompanied with an application fee of USD 100 (non-refundable). Director SCIE to be copied in the same: director@scie.ac.in
- The student should apply and finish the application process at least 2 months in advance. The applicant should pay the entire fees before the start of the program.
- In case of cancellation, due to rejection of VISA, the student will be entitled to a refund upon submission of appropriate documents.

2. Eligibility Confirmation:

- Officer I/C Internationalization, FoMHS (after confirmation from Faculty I/C of Internationalization FoMHS and in consultation with the Director SCIE) to confirm eligibility.
Eligibility documents required:
 - Bonafide certificate from a recognized university / medical college
 - NOC from the Head/Dean of the institution on the official letterhead
 - Letter of Recommendation from an appropriate academic head ascertaining the academic eligibility of the applicant
 - A copy of valid passport (with front and back page), with minimum 6 months validity from the date of completion of the proposed SIP
- **UG program (MBBS) is open for girl students only.** However, PG programs, (MD / MS / DM / MCh) including Fellowships, will be coeducational and hence open for girls as well as boys.
- Observations (if any) and final decision of eligibility to pursue the SIP will then be communicated to the applicant.

3. Communication to the Applicant:

As regards her eligibility for enrollment for the SIP at SIU and welcome with clear set of instructions as regards procedure and documents required for FRO registration, Do's and Don'ts on campus, entitlements of the applicant etc. will be jointly communicated by Director SCIE and Faculty I/C of Internationalization at SMCW & SUHRC

4. **Payment of Program Fees:**

- The applicant must pay the SIP fee based on the duration of the program opted for
Beneficiary Bank Details:

Swift Code: - AXISINBB315
Bank Name: - AXIS Bank Ltd
Branch: - S B ROAD Pune , 411016
Beneficiary Acct No. :- 315010100148863
Acct Name: - SIU INTERNATIONAL PAYMENT GATEWAY CASH
Address. : - S.B.Road, Pune 411016
Account Type - Savings

Intermediary / Correspondent Bank

To:-

Bank Name: - J. P. MORGAN Chase Bank
Address: - New York
Swift Code: - CHASUS33
Account Number:- 001-1-407376
Account Name:- AXIS Bank Ltd

- The applicant must submit the payment receipt/proof of payment of fees to the Officer I/C Internationalization, FoMHS and SIP Coordinator, SCIE.

5. **Program Coordination: Jointly by SCIE and SMCW & SUHRC.**

Applicant confirms acceptance of the schedule of SIP and intimates travel schedule to SIP Coordinator, SCIE with cc to Officer I/C Internationalization, FoMHS and Director, SCIE

SIP Coordinator confirms the receipt of the payment, acceptance of the schedule opted for along with the travel details and informs the applicant regarding the role of SMCW & SUHRC vis-a-vis role of SCIE.

- a) SMCW & SUHRC liaises with the student for rotational program within all depts of SMCW & SUHRC
- b) SCIE liaises with the student for
 - Visa support
 - Airport pick-up and drop (Pune/Mumbai only)
 - Reception on campus and orientation to accommodation and meals
 - On-Campus accommodation on a twin sharing basis in the faculty quarters with 3 meals per day (coupons will be provided)
 - Foreigners Regional Registration Office (FRRO) process assistance
 - Orientation program to SIU ecosystem and SIP induction
 - Schedule of visit(s) and non-medical modules (as indicated by the student)
 - Coordination for visit to non-FoMHS departments of SIU within the Lavale campus.
 - Non-academic and cultural activities such as interaction with other international students, participation in activities undertaken by the SCIE, Heritage walk etc.

-

6. Induction and Program Overview for the SIP:

- 1) Orientation program by SCIE and SMCW & SUHRC on Day 1 of the SIP
- 2) Experiential Learning at SMCW & SUHRC: Monday to Friday only (Rotation through the various clinical depts. of SUHRC as per the choice indicated by the applicant.
- 3) Non-medical component: Minimum 3 days in a 28 day cycle of SIP at either a non-medical or non-FoMHS department of SIU in Pune: As per the choice indicated by the applicant preferably with institutes located at Lavale.
- 4) Saturday post 2pm and Sunday: Discretionary to the applicant. No academic delivery to be offered by SMCW & SUHRC, or SCIE.

7. Program Monitoring:

- Monitoring will be conducted on a daily basis, with a comprehensive assessment at the conclusion of the program by the respective department and its head.
- Student to give her feedback department wise

8. Certificate of Completion :

- 1) A certificate will be awarded to the student on completion of the SIP.
- 2) A testimonial video is requested from the student (Responsibility of Officer I/C Internationalization, FoMHS)

9. Return to Home Country:

The student returns to her home country. Cabs for the airport transfer from her accommodation in SIU Lavale to either the Mumbai/Pune International airport will be managed by SCIE only once before and after the program.

Student-Specific Application Process Flowchart (No Connecting Lines)

Student Application Process

1. Initial Contact

2. Submit Application & Documents

3. Receive Eligibility Confirmation

4. Make Payment & Submit Proof

5. Confirm Program Acceptance & Travel Schedule

6. Attend Induction & Orientation

7. Participate in Experiential Learning & Non-Medical Activities

8. Provide Feedback & Receive Certificate

9. Return to Home Country

Program Mentors:

Dr Anita Patankar,
Director, SCIE, SIU

Dr. Asmita Dani
Director, Academics, SIU

Faculty In-charge:**Dr Sarang Barbind,**

Physician & Endocrinologist

M.B.B.S, DNB General Medicine, M.N.A.M.S., Post-graduation diploma in clinical endocrinology and Diabetes (Royal College Of Physicians, UK)

Email: sarang.barbind@suhrc.siu.edu.in

Tel/WA: +91 9637311000

SCIE Incharge (For SIP)**Dr Manasi Phatak,**

Head, International Mobility

Symbiosis Centre for International Education

Email: head_internationalmobility@scie.ac.in

Tel/WA: +91 9096917324

Program Details:

I. Medical Electives offered at SMCW & SUHRC:

- Flexibility in creating a comprehensive program with choices from Obstetrics & Gynaecology, General Medicine, General Surgery and Intensive Care
- Buddy system of peers

Medical Electives Offered: Student to choose at least one elective
(Total number of electives opted will depend on duration of SIP)

S.No	Department	Course work
1.	Obstetrics & Gynaecology	<ul style="list-style-type: none">• Students will take part in the daily ward rounds and can present the cases as part of the bedside tutorials. They will be encouraged to observe various gynecological surgeries .• Students will be attending delivery suites in daytime and out of hours as the case may be. They will be monitoring the progress of labor, perform auscultations and intrapartum monitoring. They can draw partograms, observe the delivery process and follow up women in the postnatal ward. It will be expected that they observe at least 5 spontaneous vaginal deliveries, 2 CS and 2 instrumental deliveries.• Students will maintain a Log book of clinic attendance, procedures observed, Labour cases and ward rounds.• At the end of the elective, students will be confident to elicit a comprehensive history in Obstetrics/ Gynaecology, perform Abdominal examination in pregnant women and abdo-pelvic examination in Gynaecology patients. They will also be observing cytological smears. Students can discuss the provisional diagnosis, order relevant investigations and arrange for follow ups.
2.	General Medicine including subspecialties like Neurology, Cardiology and Gastroenterology.	<ul style="list-style-type: none">• Activities to be undertaken: Outpatient clinics in Cardiology, Internal Medicine, Neurology and Gastroenterology.• Observe Outpatient procedures like OGD scopies - Ward rounds.• History and physical examinations in clinics and in patients.• Order relevant investigations, present bedside tutorials and monitor the progress of patients.• Observe procedures like urinary catheterisations, phlebotomies, IV cannulations, Nasogastric tube insertion, chest drains etc.
3.	General Surgery	<ul style="list-style-type: none">• Attend outpatient clinics in General surgery, Urology, Neuro and Orthopaedics.• Observe Outpatient procedures like OGD scopies, catheterisations, suturing etc.

		<ul style="list-style-type: none"> ● Attend Ward rounds with consultants . ● History taking and physical examinations in clinics and in the wards. ● Order relevant investigations, present cases as bedside clinics and monitor the progress of patients. ● Observe various Open and Laparoscopic surgeries in operation theaters.
4 .	Intensive care	<ul style="list-style-type: none"> ● Observe ICU protocols and management ● Order investigations and follow ups ● Observe and assist in various procedures in intensive care. ● Observe procedures like ABG, intubations etc under supervision ● Attend theaters and observe various anesthetic procedures. ● Assist in monitoring intra op and post op patients. ● Be a part of team for Daily rounds in ICU

II. Visits to Primary Healthcare Centre /Rural Health Centres:

Organized by Symbiosis Community Outreach and Extension ([SCOPE](#))

Unique opportunities for the international student to experience community-driven healthcare through participation in Symbiosis University’s outreach programs, such as mobile medical units and clinics, while understanding the integration of sustainable development and health promotion in rural and underserved settings.

III. [Non Medical Electives](#): (Students can choose a combination of electives that amount to 4 hours or less for 1 day per week in a 28 day cycle)

About SYMBIOSIS INTERNATIONAL UNIVERSITY

www.siu.edu.in



Symbiosis was established by Prof. (Dr.) S. B. Mujumdar in 1971 with the motto of ‘Vasudhaiva Kutumbakam’ – the World is one Family, and has been providing quality education from KG to Ph.D. The Symbiosis International (Deemed University) offers programmes in multiple disciplines including Law, Management, Computer Studies, Medical & Health Sciences, Media and Communication, Humanities

and Social Sciences, Engineering, and Architecture and Design. Today, Symbiosis International (Deemed University) has over 40,000 students from all the states of India and from over 85 countries, providing a home away from home for Indian and foreign students.

The University has been awarded Category-I status by UGC, and an ‘A++’ grade by National Assessment and Accreditation Council (NAAC). It has been ranked 31st in India in the University Category by National Institutional Ranking Framework (NIRF) 2024. Symbiosis International (Deemed University) has been ranked globally in the 641-650 range, 31st in the world and first in India for Employer Reputation, and second-best private university in India by QS World University Rankings 2025. QS World University Rankings (Asia) 2025 has ranked the University at 216 in Asia, 42nd in Southern Asia and 23rd in India. The Times Higher Education (THE) World University Ranking 2025 has ranked the University in the 601-800 band in the World, and 4th in India. It is the only University to have received the Asia Pacific Quality Label. The University has been recognized as a 2000-Watt Smart City by the 2000-Watt Smart Cities Association, Switzerland, and is also a permanent member of the Global University Network for Innovation (GUNi).

The main campus of the University is nestled on a beautiful 400-acre land at Lavale in Pune, Maharashtra, India. Today the University has 42 constituents, 13 Research Centres, 13 Support Departments and 10 Departments of Skills & Continuing Education spread across Pune, Nasik, Nagpur, Bengaluru, Hyderabad and NOIDA in India, and at Dubai in U.A.E

The **Academics Department of Symbiosis International University (SIU)** was formed in 2002 when Symbiosis became a deemed-to-be university. Over the last 20 years, the Academics Department has evolved into a body playing an important role in pursuing academic excellence across all programmes (Post Graduate, Undergraduate, Diploma, Certificate) offered at SIU.

It plays a pivotal role in formulating academic policies for the smooth and efficient delivery of academic programmes to fulfill the university's mission of quality education, knowledge generation, and dissemination. It coordinates academic activities across different constituents of the university, and plays an important role in ensuring compliance with the relevant rules and regulations of the University Grants Commission (UGC) and other relevant governing agencies.

About the FACULTY OF MEDICAL & HEALTH SCIENCES (FOMHS)

FoMHS is a constituent of the prestigious Symbiosis International University (SIU). FoMHS has conceptualized & implemented a group of unique, innovative and career oriented capacity building programmes meant to raise a cadre of healthcare professionals who would ensure delivery of optimum health care services.

Institutes under FoMHS:

1. Symbiosis Institute of Health Sciences (SIHS): www.sihspune.org : 2005
2. Symbiosis College of Nursing (SCON): www.scon.edu.in : 2007
3. Symbiosis School of Biological Sciences (SSBS): www.ssbs.edu.in : 2011
4. Symbiosis Community Outreach Programme & Extension (SCOPE):
<https://siu.edu.in/Health-Facilities.php> : 2012
5. Symbiosis Centre for Health Skills (SCHS) : www.schs.edu.in : 2015
6. Symbiosis Centre for Emotional Wellbeing (SCEW): www.scew.edu.in : 2018
7. Symbiosis School for Online and Digital Learning (SSODL): www.ssodl.edu.in : 2019
8. Symbiosis Medical College for Women (SMCW): www.smcw.edu.in : 2019
9. Symbiosis University Hospital & Research Centre (SUHRC): www.suhrc.edu.in : 2019

About SYMBIOSIS MEDICAL COLLEGE FOR WOMEN (SMCW)

www.smcw.edu.in



The Symbiosis Medical College for Women is the brainchild of the Founder and Chancellor of the Symbiosis International University, Prof. Dr. S. B. Mujumdar. With an objective of women empowerment and contributing to the requirement of more women doctors, Symbiosis has this exclusive college under its Faculty of Medical & Health Sciences. SMCW is the first Medical College in the country to offer free medical education!

The faculty at SMCW and SUHRC has been drawn from the best across the country. SMCW thus endeavours to produce caring, compassionate and ethical female doctors.

About SYMBIOSIS UNIVERSITY HOSPITAL & RESEARCH CENTRE (SUHRC)

www.symbiosisuniversityhospital.com



Symbiosis University Hospital and Research Centre (SUHRC), represents a new era in healthcare, situated on the SIU campus at Lavale, Pune, SUHRC is a 900-bedded tertiary care hospital accredited by the National Accreditation Board for Hospitals & Healthcare Providers (NABH) & National Accreditation Board for Testing and Calibration Laboratories (NABL). Our commitment to excellence is evident in our state-of-the-art infrastructure and facilities, inclusive of specialty and super specialty services supported by ultra-modern diagnostics. The heart of SUHRC lies in its

distinguished medical team of doctors, nurses, and paramedical professionals trained in premier institutions in India and abroad who utilize ultra-modern technology to provide top-quality clinical services, which are evidence-based and protocol-driven. ETHICS with transparency of operations are accorded topmost priority.

As part of its social responsibility and outreach initiatives, SIU has adopted 35 villages in Mulshi Taluka under the SCOPE initiative. Villagers are provided comprehensive healthcare services, including preventive, promotive, and curative care, through outreach clinics, camps and 2 mobile medical units which provide all these services to this marginalized, underprivileged and access compromised population - absolutely free of cost.

The SUHRC stands as a beacon of modern and professional healthcare. The hospital is continuously expanding its services to meet the healthcare needs of the community and therefore stands as a center of trust and hope to the community it serves. As we embark on this transformative journey, we remain steadfast in our commitment to redefine healthcare in Pune and beyond, guided by the enduring values of Symbiosis.

About Symbiosis Centre for International Education (SCIE)

<https://www.scie.ac.in/>

SCIE is a dedicated centre to promote and ensure Internationalisation of all initiatives including SIU programmes and all its campuses. Its International Promotions & Admissions, Student Events & Relations, and International Initiatives and Collaborations Teams work strategically to achieve these goals and offer a truly international ecosystem for students and faculty.

Committed to building global networks of like-minded individuals and organisations, and promoting research and academic excellence, SCIE also manages the unique Symbiosis Centre for India Australia Studies (SCIAS), Symbiosis Centre for European Studies (SCES), and the Symbiosis Centre for Research in Internationalisation of Higher Research. Its Centre for Engagement with Africa (SCEA) focuses on capacity building in Africa, especially through the many scholarships and freeships SIU offers under its 'Engage with Africa' initiative.

Three Facets of Internationalisation @ SIU

- Teaching-Learning and Evaluation: 1) Student/faculty mobility, COIL, co-creation of courses, co-teaching,

FDPs, Semester abroad-Credit transfer to and from Foreign Universities through Global immersion programme

(GIP) 2) SIU - Deakin Hub

- Joint International Research projects: Erasmus+, DAAD, UKIERI, GCRF, USIEF, Asia Foundation, SPARC

- Collaboration for Extension activities: SIMC and Salisbury University – USA, SSLA and Bournemouth University – UK, SSLA and DePaul University – USA, SSBF and Universitat Pompeu Fabra - Barcelona.



About Pune and How to Reach



Pune, the cultural and educational capital of the Indian State of Maharashtra is also known as 'The Oxford of the East' due to the presence of several well-known educational institutions. The city has emerged as a major educational hub in recent decades, with nearly half of the total international students in the country studying in Pune.

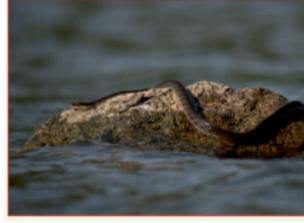
Pune, is a bustling metropolis with an estimated population of about 7 million spread over 138 sq. kms. It is situated at an altitude of 559 meters above sea level. It has been ranked as one of the most liveable cities in India several times. The temperatures range from 15^oC to 35^oC with an average rainfall of 68 cm.

The city has an excellent cosmopolitan mix catering to the largest number of student population in India coming from different states & cultures. With its safe and secure living conditions the abundant nightlife options of the city provide a welcome option for students.

Pune is well connected with National Highways, Express Highways leading to Mumbai, Bangalore, Hyderabad, Ahmedabad and other major cities. Pune railway junction has connectivity with almost all parts of the country. Pune International Airport provides air connectivity to all major airports in India.



About Symbiosis Lavale Campus: ([Video link of Sandipani and Vashishta](#))



Symbiosis - Lavale campus is rich in scenic ambience, spread across 350 acres having biodiversity in nature with two bandharas (water storage reservoirs) of total storage capacity of about 30,00,000 liters of freshwater and home to more than 191 species of birds, butterflies, reptiles, amphibians and mammals. The University has developed three butterfly gardens and saplings of more than 200 food plants and nectar plants. Around 40 species of butterflies and many types of moth species are seen on the campus.

About the on campus apartment ([video link](#))

The on campus apartment is one of the best places in West Pune with our Leadership Development Centre, a premium residential training facility. Located in the picturesque setting at the hill base amidst lush green mountains at Lavale. It is part of Symbiosis International University campus. All rooms are equipped with Television, Tea/Coffee Maker, Mini Fridge and Air Conditioning, and other essential appliances like Iron with a ironing board, washing machine, hair dryer, and essential toiletries.

