

MBBS PROGRAMME

PROSPECTUS
**2025
2026**



“
The future belongs
to those who believe
in the beauty of
their dreams
”



॥वसुधैव कुटुम्बकम्॥

SYMBIOSIS MEDICAL COLLEGE FOR WOMEN SYMBIOSIS UNIVERSITY HOSPITAL & RESEARCH CENTRE

A constituent of SYMBIOSIS INTERNATIONAL (DEEMED UNIVERSITY)

(Established under section 3 of the UGC Act, 1956) | Re-accredited by NAAC with 'A++' | Awarded Category - I by UGC



Motto

॥ वसुधैव कुटुम्बकम् ॥

The world is one family

MBBS
PROGRAMME

PROSPECTUS
2025
2026



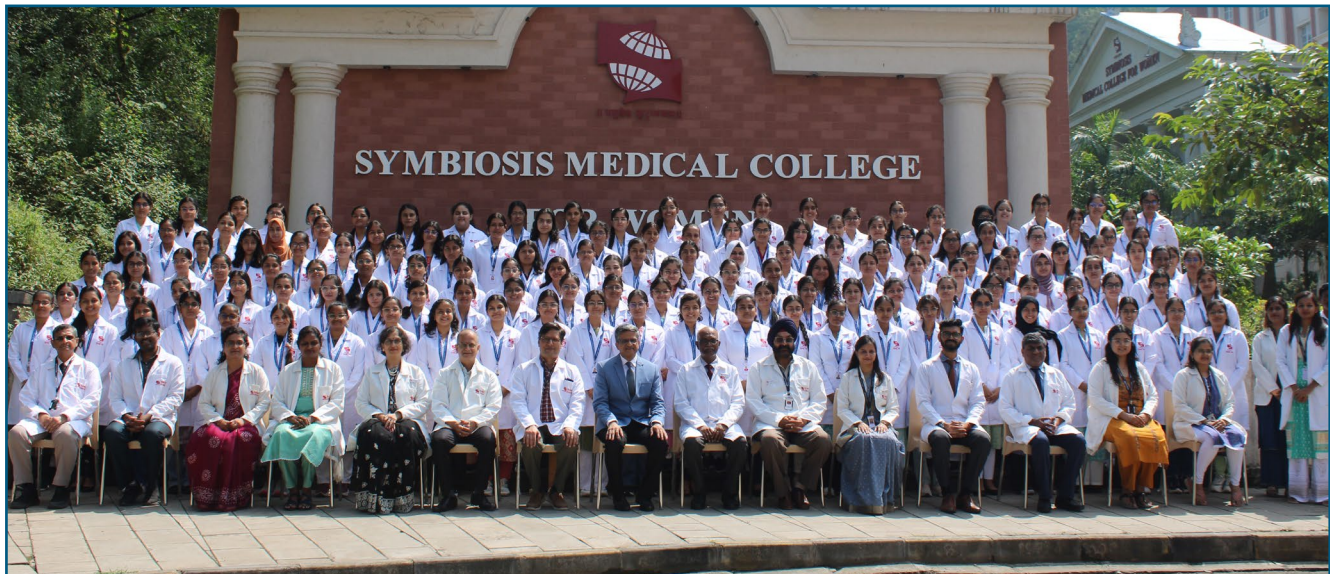
Dr. Anandibai Gopalrao Joshi

(The first Indian Lady Doctor)

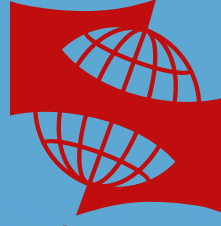
31 March 1865 – 26 February 1887

Index

S. No.	Contents	Page No.
1.	Symbiosis	1
2.	A Foreign Affair that Founded Symbiosis	2
3.	Message from the Hon'ble Chancellor, SIU	3
4.	Message from the Pro Chancellor, SIU	6
5.	Message from the Vice Chancellor, SIU	7
6.	Message from the Provost, Faculty of Medical & Health Sciences, SIU	8
7.	Message from the Dean, Symbiosis Medical College for Women	9
8.	Symbiosis International (Deemed University)	10
9.	International Collaborations	12
10.	Symbiosis Medical College for Women (SMCW)	13
11.	Symbiosis University Hospital and Research Centre (SUHRC)	15
12.	Eligibility for Admission to MBBS Programme at SMCW	16
13.	Admission Process	17
14.	Reservation Policy	18
15.	Fees Structure	19
16.	Refund of Fees	21
17.	Payment of Fees of subsequent Years	21
18.	Undertaking	21
19.	Student Services and Campus Amenities	25
20.	Anti-Ragging, Anti-Discrimination, Anti-Sexual Harassment, Anti-tobacco, Anti-smoking, Anti-drug/ Substance abuse measures.	26
21.	Grievance Redressal Mechanism	26
22.	Caution Notice	26



Induction 2024-2025



॥वसुधैव कुटुम्बकम्॥

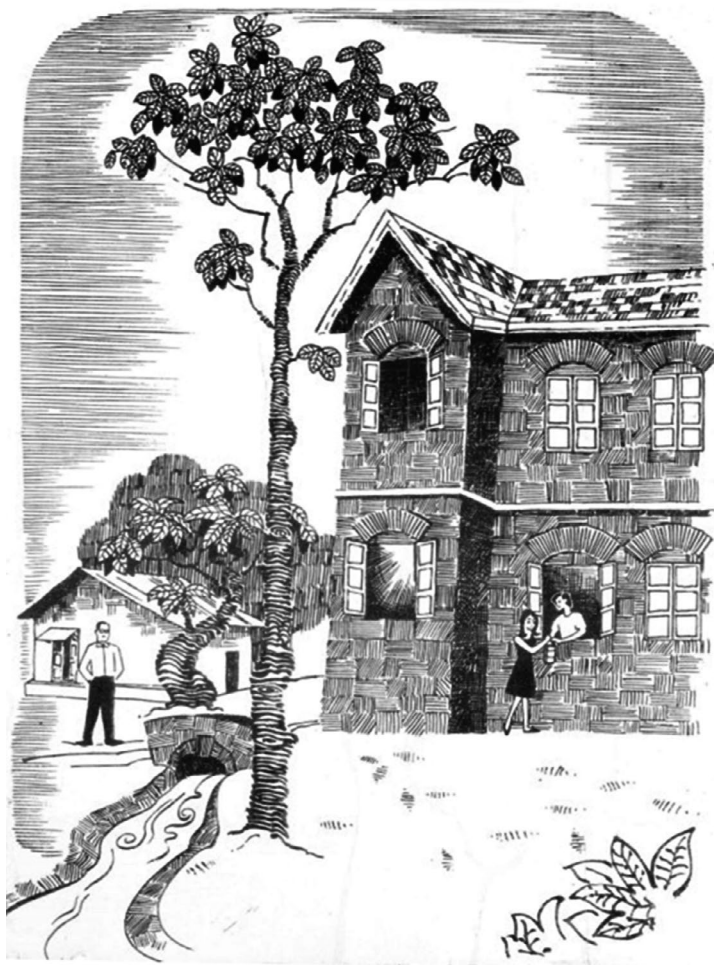
SYMBIOSIS

Inspired by the ideals of 'Vishwa Bharati' of Gurudev Tagore and 'Antar Bharati' of Sane Guruji and with a deep desire to help foreign students, an idea of 'Symbiosis' was conceived by Dr. S. B. Mujumdar in year 1971. The motto of Symbiosis is 'Vasudhaiva Kutumbakam'. Indeed, the motto is aptly justified in Symbiosis' functioning pattern as it proves to be a ground that nurtures and cares for all students immaterial of their backgrounds.

In its journey to pursue excellence, apart from Symbiosis International (Deemed University), Symbiosis has established several K12 schools, the Symbiosis College of Arts & Commerce, Institute for teacher's training and museums like the Dr Babasaheb Ambedkar Museum and Memorial and the Afro Asian Cultural Museum. The total student strength at Symbiosis is over 40,000 students.



A Foreign Affair that Founded Symbiosis



The journey of a thousand miles begins with a single step. But, it is the first step that involves deliberation and much hesitation. The Symbiosis journey however began with a surge of enthusiasm spurred on by an incident that, in itself, makes a poignant tale. As related by Hon'ble Chancellor Prof. S. B. Mujumdar himself,

“It was an afternoon on a hot day. I was standing near the window of my house overlooking the first hostel block, of which I was the rector. A strange thing happened. A girl walked up to the window of the boys' hostel room, quickly handed over something and disappeared. My curiosity was aroused and I kept watching the girl walking up to the window day after day and suspected, like any other rector would, that an affair was afoot.

So one day, I made up my mind and walked up to the door and knocked. When the door opened, I saw a Mauritian student lying in bed. His face was pale and his eyes seemed to have sunken low. I was puzzled!

When I turned to the boy for an explanation, he said, ‘Sir, I have an attack of jaundice & I'm feeling extremely weak. I cannot stand

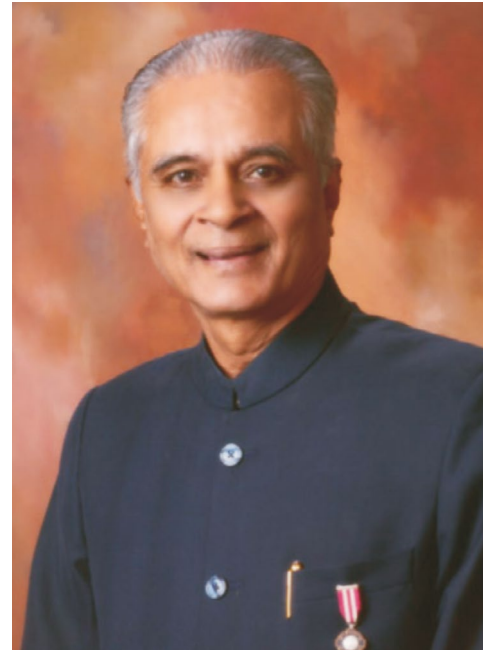
up, nor walk a few steps. A girl from my country brings me food. However, since ladies are not allowed to enter the boys' hostel, she hands over the tiffin box through the window’

I was stunned. After all, it wasn't the type of 'affair' I had expected. I was very much pained & decided something had to be done about this. That was the instance, the golden moment that Symbiosis was born”. ‘Symbiosis’ is a term in life science, meaning ‘living together of two different organisms, for the benefit of each other’. Dr. Mujumdar, himself a professor of botany, thought this name apt for the institution.

Thus the institution was founded to alleviate the problems faced by foreign students coming to India. At the time, these problems included - accommodation, meals, medical care, guidance, coaching, information about the city, amongst others.

Symbiosis has come a long way since then. Today it is home to students from more than 85 different countries. These students are offered the best learning resources, industry exposure, a strong international students' alumni network, a global recognition, and above all, a truly enriching Indian experience.

Message from the Hon'ble Chancellor



Hon'ble Prof. (Dr.) S. B. Mujumdar

Chancellor, Symbiosis International (Deemed University)
Founder & President, Symbiosis Society.
(Awarded Padma Bhushan & Padma Shri
by President of India)

It gives me lots of happiness in writing this message for the students who are aspiring to join the noble medical profession, right during the times, when medical education and healthcare service are undergoing rapid changes, marked by social, cultural, economic and spiritual integration driven by technological advancements amidst threatened environments.

The 21st century seeks for the globally competent professionals who are responsive to change, who are multinational in their perspective, multilingual, multicultural in their spirits, tech driven and those who are able to solve the problems.

Symbiosis, celebrating its Golden Jubilee year, has been inspired by the ideals of 'Vishwa Bharati of Gurudeva Rabindranath Tagore, Antar Bharati of Sane Guruji and the philosophy of Vasudhaiva Kutumbakam (The World is One Family) which stands testimony to these deep-rooted value systems and its growth over five decades.

What started as a Cultural Society in 1971, Symbiosis, has positioned itself today as one of the most sought after, leading Universities in India and abroad, comprising of eight faculties, imparting education in diverse disciplines to over 18000 students including those from 85 different countries.

During the time when having an exclusive college for women in itself is a rarity, Symbiosis thought of establishing a medical college exclusively for women out of its concern for significantly low (17%) number of women practising allopathic medicine, far less than expected standard of one female allopathic doctor per 10,000 populations. The life story of Dr. Anandi Gopal, the first Indian woman doctor and our ethos in propagation of women empowerment also played a vital role in the establishment of Symbiosis Medical College for Women (SMCW).

The world class infrastructure, ecofriendly blissful environment, habitat of varied flora and fauna, evidence based, quality driven ethical health care services, learner-centered, affordable, interactive, locally driven global medical education, distinctly qualified and richly experienced faculty are the distinct ascriptions of our commitment to our stakeholders.

The unique ambience at Symbiosis will give you a feeling of being in an extended universal family. I am sure you will take an informed call and decide to be part of Symbiosis family.

With my best wishes, I extend you warm welcome!

**Award from Government of India for
*Contribution in the field of Education***



Prof. (Dr.) S. B. Mujumdar receiving 'Padma Shri' from
His Excellency Dr. A.P.J. Abdul Kalam, President of India
(2005)

Award from Government of India for *Contribution in the field of Education*



Prof. (Dr.) S. B. Mujumdar receiving 'Padma Bhushan' from
Her Excellency Smt. Pratibha Patil, President of India
(2012)

Message from the Pro-Chancellor



Dr Vidya Yeravdekar
Pro Chancellor, SIU
Principal Director, Symbiosis

Dear Students,

Greetings from Symbiosis International (Deemed University). Let me first congratulate you for making it through a tough examination like NEET and getting admission into SMCW. You have joined a prestigious University which is ranked amongst the top 50 Universities in India, as ranked by the Govt. of India.

Dr. S. B. Mujumdar was inspired by the movie “*Anandi Gopal*” which is a biopic on the first lady physician of India Dr. Anandi Gopal Joshi. The Medical College has been established in a significant year when Symbiosis is celebrating its golden jubilee.

The Symbiosis University Hospital and Research Centre, the teaching hospital attached to the medical college will provide the most befitting environment for clinical subjects. The faculty members here are experts in their fields who will help you in gaining astute understanding of the medicine discipline.

You are lucky to be a member of the large multidisciplinary Symbiosis International (Deemed University), where importance is not only given to education, but equal importance is given to the overall development of our students, who are in an ecosystem of innovation and excellence!

On your campus, you will be interacting with students from other institutes like Engineering, Management, Media, Biotechnology, and you will even get to connect with some budding chefs of the school of culinary arts and photographers from the school of photography. The campus has excellent sports, recreation and wellness facilities where you can devote time to your fitness and wellness.

During these unprecedented times due to the COVID pandemic, we congratulate you on having chosen a career in medicine that will make a difference in the lives of several people, who will need your care and compassion.

I am sure the years that you will spend at SMCW will be the most memorable years of your life!

Welcome to the Symbiosis family!

Message from the Vice Chancellor



Dr. Ramakrishnan Raman
Vice Chancellor, SIU

Dear Students, Parents, and Esteemed Colleagues,

As we stand on the threshold of a new academic year, we reaffirm our commitment to the noble mission envisioned by our Founder and Chancellor, Prof. Dr. S.B. Mujumdar, in establishing this pioneering institution exclusively for women. Inspired by the legacy of Ms. Anandibai Joshi, India's first lady doctor,

Symbiosis Medical College for Women (SMCW), is not just an educational institution; it is a beacon of empowerment and a testament to our dedication to creating a more inclusive and equitable society.

At Symbiosis Medical College for Women, we are deeply committed to nurturing the next generation of female healthcare leaders. Our medical college, nestled in the scenic Lavale campus of the Symbiosis International (Deemed University), is equipped with state-of-the-art infrastructure and facilities. With an annual intake of 150 students, we offer an environment that fosters academic excellence, research innovation, and holistic development. Our attached Symbiosis University Hospital and Research Centre provides an immersive learning experience, ensuring our students gain the practical skills and ethical grounding necessary to excel in the medical profession.

Our distinguished faculty, comprising highly experienced and senior staff, is dedicated to providing the best training possible. We aim to produce skilled women doctors who are not only proficient in their medical expertise but are also empathetic, ethical, and compassionate practitioners, ready to contribute to the health and well-being of communities.

As we move forward, we remain focused on our objectives of women empowerment and nation-building through increasing the number of female doctors. We believe that education is a powerful tool for social change, and by empowering women, we empower families, communities, and the nation at large.

I invite you to join us on this remarkable journey. Together, let us strive to make a difference in the world, one patient, one community, and one breakthrough at a time.

Wishing you a year filled with learning, growth, and success.

Message from the **Provost, Faculty of Medical & Health Sciences**



Dr. Rajiv Yeravdekar

Provost, Faculty of Medical & Health Sciences, SIU
Ex-Member, BoG, Medical Council of India (MCI)

I am delighted to welcome you all to the Symbiosis Medical College for Women (SMCW). At the outset, please accept my heartiest congratulations on successfully clearing the NEET examination. This year, your success deserves special praises and accolades due to the tiring and challenging times you all faced in your preparations, due to the COVID 19 pandemic.

You have made the right choice in pursuing a career in Medicine, more so at a medical college under the ambit of a prestigious university like Symbiosis International (Deemed University) SIU. In furtherance to the vision and objectives of establishing this medical college exclusively for girl students, the academic environs provided at SIU will offer you the perfect ecosystem to emerge as humane, compassionate and ethical medicos.

Given the serene natural surroundings amidst which the SMCW is located and the coexistence of sister institutes, and the teaching hospital Symbiosis University Hospital & Research Centre (SUHRC), I am sure you will have a pleasant campus experience and your sojourn at SMCW will undoubtedly be the most memorable and the one which you will cherish lifelong.

Welcome!

Message from the Dean, SMCW & SUHRC



Dr. Prasad Bhanap
MBBS, MD (OBGYN)
Officiating Dean, SMCW & SUHRC

As the Officiating Dean of the Symbiosis Medical College, it is with great pride that I extend a very warm welcome to the MBBS students of Symbiosis Medical College for Women (SMCW) along with its attached teaching hospital, Symbiosis University Hospital and Research Centre (SUHRC) under the umbrella of the Symbiosis International (Deemed University). SMCW and SUHRC will be the places where young girl students of today will be transformed into lady doctors of tomorrow.

Being aware of the fact that the medical education of the millennium is rapidly undergoing a paradigm change, the Symbiosis Medical College for Women is driven by the passion to ensure that the outgoing lady medical professionals are globally competent, who can lead and innovate and are instilled with the spirit of unity in diversity and the conscience of 'Vasudhaiva Kutumbakam'. With this institutional philosophy in the backdrop, the SMCW is committed to make exemplary citizens who are socially and ethically driven. SMCW will also endeavour to produce medical professionals who are locally responsive and globally relevant

Cultivating a rich diversity is a hallmark of Symbiosis. At SMCW and SUHRC we are committed to providing the students with a student centric and community oriented quality learning and research experience. SMCW will strive to leverage emerging technologies in providing a world class immersive and experiential learning environment. All round personality development for students is an inherent aspect of the Symbiosis ethos. Towards this end, students will have abundant opportunities to join and take part in various co-curricular activities, sports and cultural festivals.

I am very confident that young girl students will enjoy the process of learning at SMCW & SUHRC and transform into medical professionals who will be invaluable assets to the society and the nation.

With all good wishes for a glorious career. Jai Hind.

Symbiosis International (Deemed University)



Symbiosis International (Deemed University) was established in 2002. Its beautiful campus is nestled on 350 acres of land at Lavale on the outskirts of the city of Pune in Maharashtra, India. The University's name fittingly captures the quintessence of the relationship with international students, a mutually beneficial bond between Indian and International student communities. Today, the University has students from all States of India and over 85 countries across the globe. The University has established 37 Constituents, 11 Departments of Skills and Continuing Education, 7 Research Centers and 9 Support Departments. All the university campuses epitomize the Symbiosis vision, 'Promoting International Understanding through Quality Education' and are a beehive of international students from all across the globe interacting with Indian students and getting accustomed to the Indian culture, traditions and hospitality.

The University offers programmes at Undergraduate, Postgraduate and Doctoral levels under the Faculties of Law, Management, Computer Sciences, Health Sciences, Media Communication, Humanities & Social Sciences, Engineering and Architecture & Design. The University has seven dedicated research centers - Centre for Nanosciences and Nanotechnology, Centre for Medical Image Analysis, Centre for Behavioural Studies, Centre for Applied Artificial Intelligence (AI), Centre for Advanced Legal Studies and Research and Centre for Waste Resource Management and Center for Cell Stem Research.

Towards its commitment to the Institutional Social Responsibility, the University has a fully dedicated Centre called Symbiosis Community Outreach Programme and Extension (SCOPE) which has an objective of undertaking a systematic and planned program of philanthropy to achieve its social obligation towards society and positively impacting the community around the University campus. The activities of this Centre include Healthcare services, Finance & Banking, Computer Literacy, Legal Counselling, Waste Management etc. As a part of service learning, students also work with NGOs on different projects. In line with the SCOPE initiative, Family Doctor Clinics (FDC) and Mobile Medical Unit (MMU) have been launched. The SCOPE programme caters to the requirements of 22 villages around the University Campus.

Recognition/Accreditation/ Rankings:

The Medical Council of India (MCI) vide its letter no: MCI-34 (41) (E-27)/2019-Med./191065 dated 17-02-2020 has given permission to the University to establish the Symbiosis Medical College for Women with a sanctioned annual intake of 150 seats. The University has been awarded the Category-I status by the University Grants Commission in 2018. The University has been awarded Category-I status by UGC, and an 'A++' grade by National Assessment and Accreditation Council (NAAC). It has been ranked 32nd in India by National Institutional Ranking Framework (NIRF) 2022, and 10th by Atal Ranking of Institutions on Innovation Achievement (ARIIA) 2021. Internationally, the Times Higher Education (THE) World University Ranking 2023 has ranked the University amongst the top 1000 Universities in the World, and 23rd in India. THE World University Rankings 2023 by Subject has ranked the university in the 401-500 band in Social Sciences, in the 501-600 band in Business & Economics, in the 501-600 band in Accounting & Finance, in the 401- 500 band in Computer Science, and in the 601-800 band in Engineering. QS World University Rankings has ranked the university amongst the top 351- 400 in QS Asia University Rankings 2023, and 78th in QS Asia University Rankings 2023 – Southern Asia. The University is ranked between 501-550 in the World, 11th in India, and is the 2nd Private Institution in India for Business & Management under Business & Management (a sub category in Social Science and Management) by QS World University Rankings 2022 by subject.



SIU Helipad



View from Vistapoint



View from SIU Viewpoint



SIU Play Ground

International Collaborations



Symbiosis International (Deemed University) [SIU] encourages an environment that promotes diversity and multi-cultural understanding amongst students, staff and faculty. The Symbiosis Centre for International Education (SCIE) is the centralized office for driving internationalization across the university through a variety of programs. Many of these are in partnership with foreign universities. The University has 75 active collaborations with universities across France, Germany, UK, USA, Canada, Japan, Singapore, Australia amongst others. Creating a truly international learning environment for students and faculty to be immersed in is ensured through student exchange, study abroad, summer/winter exchange, International conferences/ webinars and collaborative research. Faculty Programs encourage Scholars-In-Residence, Visiting Scholars, Lecture Series, Joint Research and Faculty Exchange. SCIE has also designed a Global Immersion Policy with scholarships for students who wish to travel abroad to enrich their global exposure and learning. A distinctive programme offered by SCIE to foreign partner universities is the “Study India Program”, which offers international student\ faculty a short but deep dive immersion (2-to-4-week schedule) into the culture, heritage, politics, business and essence of India in bespoke programmes that integrate academic content with a holistic understanding and experience of India.

Symbiosis Medical College for Women



The Symbiosis Medical College for Women is the brainchild of Prof. Dr. S. B. Mujumdar, the Founder and Chancellor of the Symbiosis International (Deemed University). The biographic movie on India's first lady doctor, Ms. Anandibai Joshi was the inspiration behind the idea of creating a medical college exclusively for women.

Ms. Anandibai Joshi's personality is an inspiration for women. Born in Pune, Anandibai Joshi was the first Indian woman who obtained a doctorate degree. As was the practice in mid 1800s, she was married at the age of nine to Mr. Gopalrao Joshi, a widower almost twenty years her senior. At the age of fourteen, Anandibai gave birth to a boy, but the child survived only for ten days for lack of medical care. This proved to be a turning point in the life of Ms. Anandi Joshi, and inspired her to become a physician. She learned to read and speak Sanskrit and English.

Anandibai commenced her medical training at the age of 19. She travelled to New York from Kolkata (Calcutta) by ship, chaperoned by two female English missionary acquaintances of the Thorborns. In America, her health worsened because of the cold weather and unfamiliar diet. Nevertheless, she graduated with an MD in March 1886. On her graduation, Queen Victoria sent her a congratulatory message. She returned to Maharashtra, India and became the first lady physician of India.

The Anandi Gopal Scholarship Scheme which provides a full academic fee waiver for 05 top ranking students at the NEET Entrance Examination who secure admission at SMCW is a tribute to the professional achievements of Anandi Gopal, India's first Lady Physician who secured western academic qualifications.

With an objective of women empowerment and contributing to nation-building by increasing the number of lady doctors, Symbiosis has established this exclusive Medical College for Women under the Faculty of Health Sciences. It has always been Prof Mujumdar's concern that only 17 % of practicing allopathic physicians are women, and India needs more lady doctors. He has been pursuing his dream of establishing a world class medical college exclusively for women with an objective of women empowerment and contribution to nation building.

The Medical College is located at the scenic campus of the Symbiosis International (Deemed University) at Lavale near Pune. The Medical College and its attached teaching Hospital and Research Centre have state-of-the-art infrastructure and facilities. Presence of the sister institutes within the campus like the Symbiosis Institute of

Technology (SIT), Symbiosis School of Biological Sciences (SSBS) and the Research Centers such as Symbiosis Centre for Stem Cell Research (SCSCR), Symbiosis Centre for Medical Imaging Analysis (SCMIA), Symbiosis Centre for Emotional Wellbeing (SCEW) Symbiosis Centre for Applied Artificial Intelligence (SCAAI) Symbiosis Centre for Behavioral Studies (SCBS), Symbiosis Centre for Nanoscience and Nanotechnology (SCNN) & Symbiosis Centre for Waste Resource Management (SCWRM) adds to our academics, clinical teaching and research.

SMCW will be one of the first fully residential Medical College exclusively for women in India with an annual Intake of 150 girl students.

The faculty at SMCW and SUHRC are highly qualified, experienced, clinically competent, IT proficient and updated with their teaching abilities. The faculty have intent and inclination for teaching, learning, research and evidence-based education and to modern methods of pedagogy including that of AETCOM (Attitude, Ethics and Communication Module) being implemented by MCI/ NMC. The best of the faculty is drawn from whole of India, and they carry the ability to synergize their experience and expertise with inter/multi- disciplinary approach beyond healthcare. Faculty members are encouraged to participate in various faculty development programmes & attend conferences and workshops for their personal development. Faculty would be playing their role not only of academicians and clinicians but also mentors for multi-faceted development of students.

The campus is well equipped with state-of-the-art facilities, well-furnished and equipped classrooms, laboratories with IT facilities and Wi-Fi connections to adopt the new teaching methodologies. In addition to the University Library, the Medical College has the Central Library as the learning resource center for the students that houses more than 4739 text and reference books, Indian and foreign Journals, with internet nodes. The attached teaching hospital has good clinical material available for training of the medical graduates and postgraduates. In addition to the advanced diagnostic (CCL) laboratories, the teaching hospital has equipment's available beyond the prescribed norms of NMC. e.g., 128 slice CT, 3 Tesla MRI, Cath lab, Dialysis, Endoscopy Unit etc.

The Primary Health Centers (PHCs), the Urban Health Training Centre (UHTC) & Rural Health Training Centre (RHTC) are the additional resources available to train the students for the community-based learning and research.



Symbiosis University Hospital and Research Centre



SUHRC is a 900 bedded teaching hospital attached to SMCW. Besides, Medicine, Surgery, Obstetrics & Gynaecology, SUHRC also has other departments viz. Paediatrics with Neonatology (including an NICU), Orthopaedics, ENT, Ophthalmology, Gastroenterology, Urology, Nephrology with dialysis beds, Pulmonology (chest medicine), Critical Care Medicine, a full-fledged Pathology lab and a Blood bank. There is also a Cardiology Dept. (with a Cath lab). There are 107 ICU beds. SUHRC has 20 Operation Theatres, which cater to all the surgical disciplines. All theatres are 'modular' with 2-way data transfer facilities. The hospital currently draws an Out Patient load of close to around 1000-1500 patients per day and has more than 65% bed occupancy.

The SUHRC provides top quality clinical services, which are protocol driven and evidence based. ETHICS with transparency of operations are accorded topmost priority.



Eligibility for Admission to MBBS Programme at SMCW

- i) All admissions are being made based on the NEET eligibility and counselling by Directorate General of Health Services (DGHS)/ Medical Counselling Committee (MCC), the admission policy is formulated based on the guidelines as given by MCI/ NMC, DGHS, MCC and Hon'ble Supreme Court of India as notified from time to time.
- ii) The admissions for first year MBBS Programme shall be done as per the eligibility guidelines notified by the MCI/ NMC, vide; Graduate Medical Education 1997, amended up to May 2018.
- iii) In addition to eligibility requirements at the qualifying examination as notified by MCI/ NMC/ NTA, the candidate seeking admission to MBBS Programme should qualify in NEET examination and her name should appear in an All India Merit List of the qualified candidates prepared on the basis of All India Rank at NEET (UG) by NTA. The candidates shall be admitted to MBBS Programme from the said list only.

Further, candidates will have to participate in Admission Counselling Process conducted by DGHS-MCC as per the guidelines of Supreme Court/ Ministry of Health & Family Welfare, Government of India/ MCI/ NMC as notified from time to time.

For more details, visit: <https://neet.nta.nic.in/>

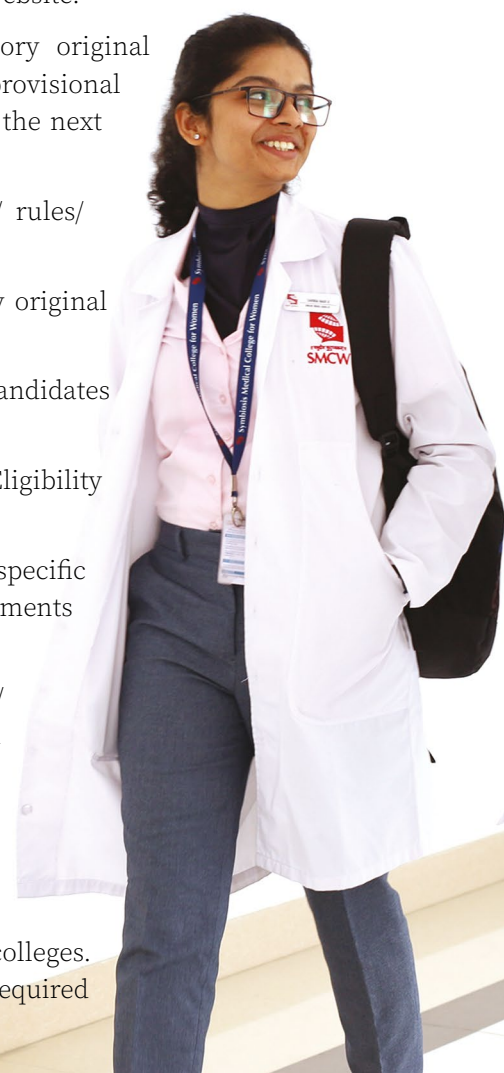


Admission Process

- All admissions for MBBS Programme at SMCW will be done through National Eligibility cum Entrance Test (NEET-UG) on merit basis in the form of a rank obtained in NEET by MCC.
- 100% seats i.e. 150 (One Hundred Fifty) of MBBS Programme at SMCW will be filled by admission counselling conducted by Directorate General of Health Services (DGHS)/ Medical Counselling Committee (MCC) at SMCW/ SIU.
- 85% seat from General Category and 15% seats from NRI Category students shall be filled the for academic year 2025-26:

Sanctioned Intake	General Category	NRI Category
150	127	23

- Counselling Round(s) for General/ NRI Category including MOP-UP Round(s) shall be conducted as per norms laid down by DGHS/ MCC and the rules/ guidelines shall be available on the MCC/ DGHS/ SMCW website.
- Institutional Stray Vacancy Round(s) for General/ NRI Category shall be conducted as per norms laid down by DGHS/ MCC/ SMCW/ SIU and the rules/ guidelines shall be available on the MCC/ DGHS/ SMCW website.
- For those seat(s) filled from General Category under the Institutional Stray Vacancy Round(s), the academic fees shall be as prescribed for the General Category.
- Candidate seeking provisional admission under status retention/ upgradation, shall submit requisite fees along with original document(s) and two sets (duly attested), as prescribed for General/ NRI Category by DGHS/ MCC/ SMCW/ SIU on or before stipulated schedule notified on the website.
- Candidate who fails to report/ pay prescribed fees/ submit mandatory original document(s) within the stipulated time shall not be considered for provisional admission under any circumstances and such seat(s) shall be allotted to the next candidate on merit.
- The refund of fees policy shall be in accordance with the guidelines/ rules/ regulations of the MCI/ NMC/ DGHS/ MCC/ SIU.
- In case of discrepancy in name including spelling, candidate shall carry original affidavit/ undertaking issued by appropriate authority.
- At the time of provisional admission, all the original document(s) of the candidates shall be submitted to office of the Dean, SMCW.
- Students who have an overseas qualification must obtain an Equivalence/ Eligibility Certificate from Association of Indian Universities (AIU).
- Apart from the regular documents, the NRI students will have to submit specific documents for admission to NRI category seats as mentioned in “Documents Required” section.
- Candidates seeking provisional admission for MBBS Programme at SMCW/ SIU **has to register for private deemed universities by paying the registration fees as notified by DGHS-MCC on their website.**
- Subsequent to the registration and payment, candidates will participate in Choice Filling, Locking and Seat Allotment process.
- Results of DGHS-MCC Counselling/ Mop-Up is notified on the DGHS-MCC website including name of successful candidates and their allotted colleges. Candidates have to visit the allotted Colleges IN PERSON along with all required





documents for completion of admission formalities. Cancellation/ Surrendering of Seat will be strictly in accordance with Rules/ Regulations of DGHS/ MCC/ MCI/ SIU.

- During the admission process, DGHS-MCC Server closes at 5.00 p.m. on all the days. Therefore, candidates are advised to adhere to the scheduled time as notified by DGHS/ MCC/ MCI/ SMCW/ SIU. Admission Cell, SMCW will function on Saturdays/ Sundays/ Holidays, if the reporting date(s) fall during those day(s).
- All candidates are advised to visit: www.mcc.nic.in / www.dghs.nic.in / www.smcw.edu.in for regular updates.

Reservation Policy

Being a self-financed Deemed to be University, there are only two categories of admissions, (i) General Category (ii) NRI Category. Other than these, there is no provision for reservation of any kind whatsoever.

However, eligibility at qualifying exams and NEET eligibility for admission shall be as defined for respective reservation category even though a candidate comes through General Category.

Fees Structure

i) Academic, Hostel, Mess Fees, Institute and Hostel Deposit for the batch 2025-2031 in the Academic Year 2025-2026

For General Category:

Please note below important points for payment of Fees:

Total Fees Payable for Bachelor of Medicine & Bachelor of Surgery (General Category)	1st Year (Amount in Rs.)
Academic Fees (Per Annum)*	10,00,000.00
Institute Deposit (Refundable)	50,000.00
Hostel Deposit (Refundable)	20,000.00
Hostel Fees (Per Annum) (Triple Sharing)**	1,53,500.00
Mess Fees (Per Annum)	1,04,000.00
Total Fees	13,27,500.00
Date of payment	At the time of Admission

Fees are to be paid by **2 Demand Drafts** drawn from Scheduled Commercial Bank as under:

1. Academic Fees and Institute Deposit of **Rs.10,50,000/-** in the name of “Symbiosis Medical College for Women”, payable at Pune.
2. Hostel and Mess fees & Hostel Deposit of **Rs. 2,77,500/-** in the name of “Symbiosis Medical College for Women”, payable at Pune.

For NRI Category:

Total Fees Payable for Bachelor of Medicine & Bachelor of Surgery (NRI Category)	1st Year (Amount in USD)
Administrative Fees (Non Refundable) #	\$540.00
Academic Fees (Per Annum)*	\$40,645.00
Institute Deposit (Refundable)	\$680.00
Hostel Deposit (Refundable)	\$250.00
Hostel Fees (Per Annum) (Triple Sharing)**	\$1,910.00
Mess Fees (Per Annum)	\$1,290.00
Total Fees	\$45,315.00
Date of payment	At the time of Admission

Fees are to be paid by **2 Demand Drafts** drawn from Scheduled Commercial Bank as under:

1. Academic Fees and Institute Deposit of **\$41,325** in the name of “Symbiosis Medical College for Women”, payable at Pune.
2. Administrative Fees, Hostel Fees, Mess Fees & Hostel Deposit of **\$3,990** in the name of “Symbiosis Medical College for Women”, payable at Pune.

***One time fees at the time of admission to MBBS Programme. Deposit amount will be refunded without interest after completion of MBBS Programme and after submitting ‘No Dues certificate’ from all concerned.

Note:

- a) Academic Fees of subsequent years shall increase by 10% every year.
- b) Hostel and Mess fees for the subsequent year would be communicated before commencement of the next academic year.
- c) The University Examination / Supplementary Examination fees are not included in Academic Fees and will be charged separately.

- d) Government taxes would be additional as and when applicable.
- e) Medical Students are expected to compulsorily wear the prescribed uniform/sports dress on select days of the week/ ceremonial occasions and visits to other colleges. The cost of the uniforms/sports dress will be charged separately and borne by the students.

ii) Payment of Fees for General and NRI Category

- a) The Academic, Hostel and Mess Fees of the academic year 2023-2024 (MBBS Phase-I) should be paid through Demand Draft drawn from Commercial Bank in favour of 'Symbiosis Medical College for Women' payable at Pune.
- b) Academic, Hostel and Mess Fees of the subsequent years should be paid through Online NEFT/ RTGS/ SWIFT. The process for payment of fees shall be communicated prior to the commencement of the subsequent years.
- c) The candidate has to pay the entire annual fee irrespective of the deposit made by candidate to MCC at the time of registration. The amount deposited with DGHS-MCC at the time of registration will be refunded directly by the MCC authority to respective candidates.
- d) Symbiosis Medical College for Women/ SIU accepts payment only towards admission fee, academic fees and other fees as notified.
- e) **Symbiosis Medical College for Women/ SIU does not charge any Capitation Fee or Donation in whatever nomenclature or form.**
- f) All the fees are to be paid strictly through banking channels and **NOT IN CASH.**
- g) The candidate shall pay subsequent years academic, hostel, mess and other fees, as prescribed by the Symbiosis Medical College for Women/ SIU within the due date as notified from time to time. If the fees are paid after last date, the candidate will have to pay late fees as per the rules notified by the University.
- h) University examination/supplementary examination fees are to be paid when a student appears for university examination including supplementary either due to failure or detention during any particular year of MBBS Programme. Such a candidate has to pay Repeater Fees on pro-rata basis of Backlog Course(s) as applicable to the respective Year and Batch.

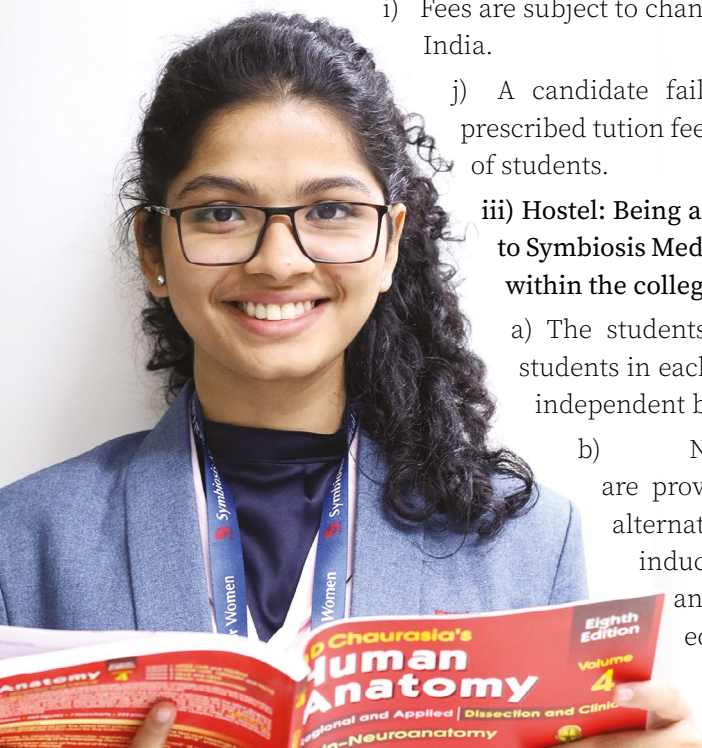
i) Fees are subject to change as per the guidelines issued by SIU /GOI/ Supreme Court of India.

j) A candidate failing in the supplementary university examination will be prescribed tuition fees for the failed subjects and allotted classes with the next batch of students.

iii) Hostel: Being a fully Residential Medical College, all the candidates admitted to Symbiosis Medical College for Women will compulsorily have to stay in hostel within the college campus.

a) The students will be provided with spacious rooms accommodating 3 students in each room. The rooms have attached toilet and WC facilities with independent beds, table chairs, book racks, cupboards, etc.

b) No electrical induction plates, air-conditioners and refrigerators are provided in the students' rooms. However, Common Rooms at alternate floors are provided with one each of the fridge, oven, induction plate, electric kettle, TV, electric Iron, Ironing table, RO and water cooler. The Hostel Rules are available on www.smcw.edu.in



All candidates and their parents / guardians are requested to note that, as communicated by the National Medical Commission (NMC), internship is an integral part of the entire MBBS program and is compulsory. Provisions of the same have been gazetted under the 'Compulsory Rotatory Medical Internships'.

Since the MBBS program (inclusive of the internship) at SMCW has been notified as a residential program, students and subsequently interns will have to be residential on campus and abide by the terms and conditions of the same, as notified by SIU from time to time.

- i) In case, a candidate resigns from admission within stipulated period, the refund of fees shall be as per the Guidelines/ Rules prescribed by DGHS/ MCC/ MCI/ NMC/ SIU.
- ii) If candidate cancels her admission after stipulated date, the candidate shall pay the fees for the entire period of the programme (4.5 Years).

Refund of Fees

- i) Candidates whose admission has been confirmed to the MBBS Programme shall submit an Undertaking in the form of Bond amounting to each towards Academic Fees of subsequent Years. In case, the student subsequently cancels/ discontinues the MBBS Programme, the student shall deposit Academic Fees of all subsequent years to obtain the No Objection Certificate from the college.
- ii) At any stage, if it is revealed that the student has obtained admission by way of mis-representation, submission of fraudulent/ forged documents or by way of unfair means, etc., her admission shall be cancelled forthwith and she shall be liable to pay Academic Fees of remaining Years of MBBS Programme. The University shall proceed with action in accordance with Rules/ Regulations/ Law in such cases.
- iii) the onus of responsibility of timely payment of fees will be that of the parent and the student. No extension will be given under any circumstances.

Payment of Fees of subsequent Years

Schedule of Payment in subsequent years

1 st Year (2025-2026)	Rs. 10,00,000
2 nd Year (2026-2027)	Rs. 11,00,000
3 rd Year (2027-2028)	Rs. 12,10,000
4 th Year (2028-2029)	Rs. 13,31,000
5 th Year (2029-2030)	Rs. 7,32,000

Every candidate seeking provisional admission to MBBS Programme at SMCW/ SIU shall execute an Undertaking along with Parent/ Guardian that:

- i) she shall abide by the Refund Rules as prescribed by the DGHS/ MCC/ MCI/ SIU.
- ii) she has submitted the true and genuine documents to ascertain eligibility for provisional admission and will be solely responsible for the consequences of providing false information, falsified/ fraudulent/ forged documents etc which will amount to cancellation of admission including all legal consequences thereof. In case, she cancels/ discontinues the MBBS Programme, she shall deposit the Academic Fees of all subsequent Years to obtain the No Objection Certificate from the college.
- iii) the awardees of 'Dr. Anandi Gopal Scholarship Scheme' shall abide by the terms and conditions of the said Scheme.
- iv) she shall pay Academic Fees of subsequent Years by due date.
- v) in case, she cancels/ discontinues the MBBS Programme, she shall deposit the Academic Fees of subsequent Years to obtain the NOC.
- vi) she shall strictly abide by the Anti-Ragging, Anti-Discrimination and Anti-Sexual Harassment Rules in accordance with the MCI/ NMC/ SIU, etc.
- vii) she shall abide by the Guidelines/ Rules/ Regulations pertaining to academic, code of conduct and discipline.
- viii) She will wear the prescribed Uniform on occasions as required by SMCW.

Undertaking

Dr. Anandi Gopal Scholarship Scheme

Symbiosis International (Deemed University) has notified the Dr. Anandi Gopal Scholarship Scheme vide Notification No. 1425; SIU/U-28/2024/966 dated on 23.02.2024.

The scholarship of 100% academic fees/tuition fees is being awarded purely on merit to the top five girls who qualified through National Eligibility cum Entrance Test (NEET) and who got selected and enrolled to Bachelor of Medicine & Bachelor of Surgery (M.B.B.S.) Programme at Symbiosis Medical College for Women (SMCW) in the first year and continued in the subsequent year as per the conditions/norms laid down in the scheme. The scholarship is not applicable to NRI/ PIOs /OCI card holders/ Foreign nationals i.e. it is open to Indian Nationals only.

Each year the Dean will review the performance of the awardees and submit a statement to SIU for continuation of the scholarship after ascertaining attendance/academic progress etc. as laid down in the policy.

After the successful completion of the MBBS programme and completion of internship, such a student is expected to serve the Symbiosis Medical College for Women for a tenure of at least one year, failing which, the student will have to refund the entire scholarship amount to the University.

All selected students have to sign an undertaking on a bond paper of Rs 100/- for accepting all the above terms and conditions of this scholarship. This undertaking should also be signed by parents/ guardians.



Healthcare services for students at SMCW

The attached 900 bedded Symbiosis University Hospital and Research Centre (SUHRC) is a tertiary care hospital offering the full range of services. The Symbiosis Centre for Health care (SCHC) specifically caters to the health care needs of all Symbiosis faculty members and non-teaching employees and students. All students of SMCW are insured by SMCW for an amount of Rs 50,000 (Rupees Fifty thousand only) for Medi-claim Policy and Rs 1,00,00 (Rupees One lakh only) for Road Traffic Accident Policy. Insurance is applicable for most In-patient treatments. A student is liable to pay the In-patient treatment cost if the insurance claim is rejected by the Insurance company for any reason whatsoever.

Insurance does not cover OPD treatment, Dental treatment, Cosmetic treatment and Lab investigations without admission etc.**

All students requiring medical attention between **8 am and 8 pm** will report to SCHS located on the ground floor of Building No 1, SUHRC. Students requiring specialist attention will be directed to the concerned Medical College Clinical Specialists at SUHRC. There are no consultation charges and charges for oral medication prescribed at SUHRC.

Between **8 pm and 8 am**, students requiring medical attention will report to Emergency and Casualty Dept of SUHRC.

Note:

* A detailed brochure on Health care services at SUHRC will be provided to the students at the time of admission.

**Students referred to Super-speciality OPDS like Neurology, Cardiology, Gastro-enterology will have to bear the consultation charges of Super-speciality services.

Phone number of SCHC: 020 66 97 5028

Phone number of Emergency and Casualty: +91 95525 25653



Standard Operating Procedure (SOP) for availing Medical Facility for SMCW Students

Preamble:

The process for the SMCW students to seek medical advice at SUHRC, if required is designed to make the students take consultations with doctors without any difficulty and miss classes.

Scope of Services:

- **OPD** [General Wing (GW): Free services / Specialty Wing (SW): Paid Service]
- **IPD** (GW: Free services / SW: under insurance cover (if applicable) or OPD-Paid Service)
- **Radiology & Laboratory:** The services are free, however, if a student insists for urgent service without an appointment, the student will have to pay as per the schedule of charges.
- **Pharmacy:** The students will get generic drugs free of cost at SCHC (only for 2 days) and GW Pharmacy. For the branded drugs the students will purchase from the SW-pharmacy.

Single Point of Contact (SPOC)

SCHC (Ground Floor, Bldg -01, Opposite Ganapati Temple): 8.00 am to 8.00 pm

SW: 8:30 am to 8:00 pm (OPD only)

Mr. Imran: 9571420334

Ms.Kanchan: 9623458660

GW: 8:30 am to 1:30 pm

Mr. Anil Rathod, Public Relation Officer(PRO):072620 03244

Dr. Ujjwalkumar Bhambare: 097666 28509

Dr. Jayshree Gorde:092093 03103

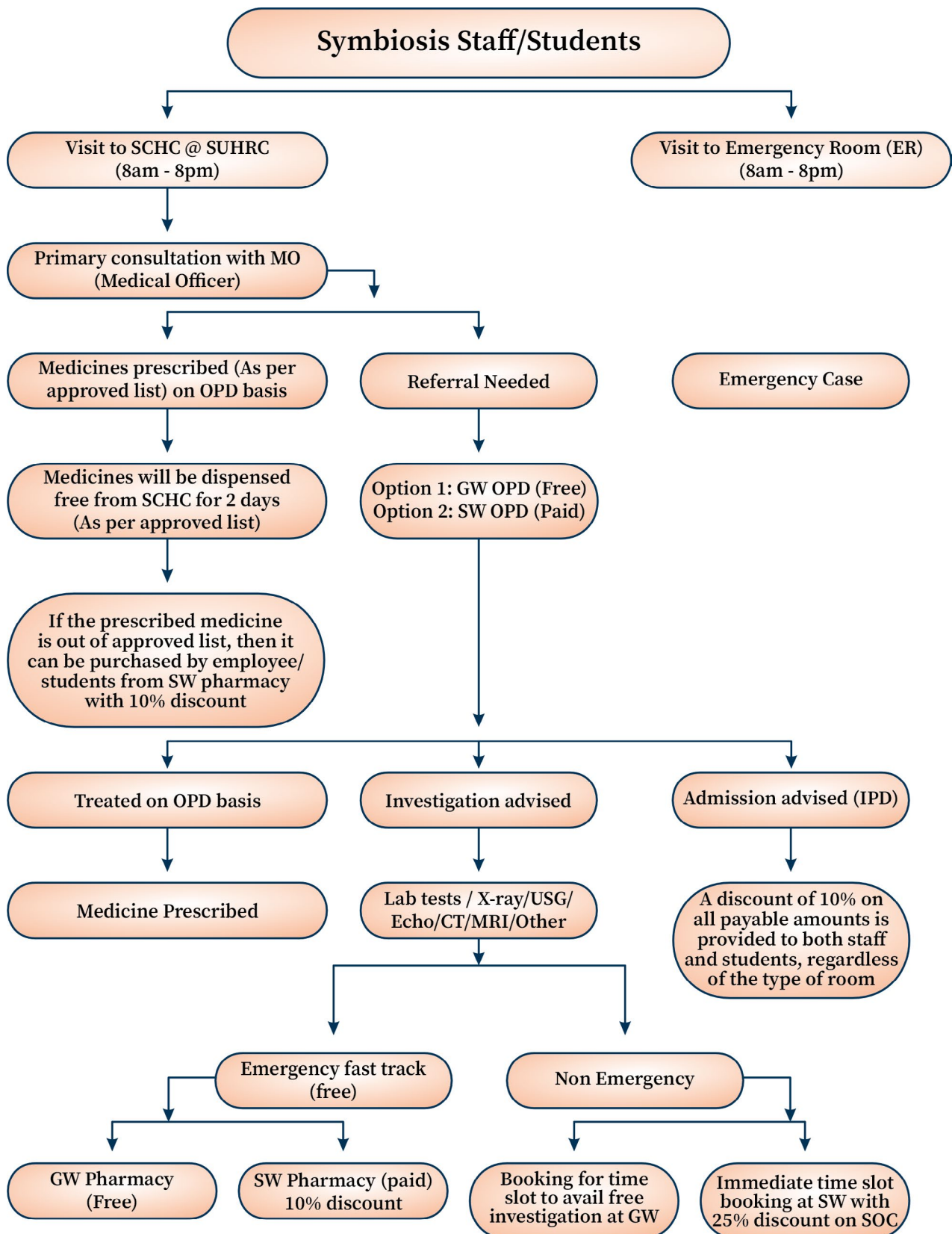
8.00 pm to 8:30 am (next day)

Emergency Room (ER): Duty Medical Officer: +91 7262003244

Registration Process

1. **Reporting at SCHC** between (8 AM to 8 PM)- Mandatory for entry in the Electronic Medical Record (EMR).
2. **Walk-in Registration** (If referred by SCHC for specialist opinion)
Registration Counter: Student Counter at GW OPD - Reception, Ground Floor, Bldg 2, SUHRC & Registration Desk at SW (Ground Floor, Bldg -01, Opposite Ganapati Temple).
The charges for the SW-paid-consultation (Rs. 500/-) for the first consultation and the same (Rs. 500/-) for follow-up visits.
Documents required: Aadhaar ID or ABHA Card ID, Mobile number, Student ID card.
3. **Online Portal/System Registration:**
Medical students may register through the Symbicare Mobile app and website of SUHRC applicable for the Specialty wing for appointments only. (Paid Service)

Consultation Process: As per the (Flow-Chart)



Follow-up Process:

If follow-up is required after getting the laboratory/radiology reports or as per the physician's / consultant's advice. The student may directly go to the concerned departmental reception at GW-OPD and must enter her details in HMIS registration and consult the physician/surgeon. At SW OPD as per schedule of charges.

Feedback:

It is desired that student enter their feedback in an electronic feedback machine installed at GW-OPD Reception, Emergency Room and the pharmacy.

Grievances / Complaints

Call or send a message on WhatsApp no. +91 7262003244 or Email: grievances.support@suhrc.siu.edu.in

For any medical negligence noticed by the student -

Contact: Medical Administrator Dr. Jayshree- +91 9209303103 (GW) /

Dr. Ujjwal- +91 9766628509 (GW) /

Mr. Imran +91 9571420334 (SW)/

Ms.Kanchan: +91 9623458660 (SW)

FAQs

Q1. What is payable by students for admission at SW under insurance cover?

Registration/admission charges, non-medical expenses, BMW charges, etc. in the specialty wing (SW). These charges are usually not covered under the insurance.

Q2. What are insurance details?

a) What is the sum insured under the Mediclaim and Road Traffic Accident Policy applicable to SMCW students?

Category	Mediclaim Policy(Sum Insured) INR	RTA Policy (Sum Insured) INR
SMCW students	50,000	1 Lakh

b) What is Covered & What is Not Covered?

Admission will be there in the SCHC observation area to start with and an undertaking that if Mediclaim gets rejected, the individual needs to pay the bill. If a student wants a special room, full charges need to be paid.

Declarations and Bonds to be furnished by students and parents

Bond to pay the fees for A.Y. 2025-26 including subsequent Year(s)/ Semester(s) as prescribed from time to time

(To be signed by all candidates admitted to the MBBS Programme with SMCW)

I, _____,

Age: _____, Address: _____

_____, having been admitted to the MBBS Programme with Symbiosis Medical College for Women, do hereby declare and undertake by this Bond as under:

1. I have taken conscious decision to pursue MBBS Programme at Symbiosis Medical College for Women ["SMCW"], a Constituent of Symbiosis International [Deemed University], after reading and understanding all the applicable Rules and Regulations.
2. I have paid the Academic, Administrative, Hostel and Mess Fees including Institute and Hostel Deposit at the time of admission and undertake to pay the fees for subsequent Year(s)/ Semester(s) as prescribed from time to time.
3. I undertake that in case, I cancel/ discontinue/ withdraw admission of MBBS Programme after cut-off date, I shall deposit Academic Fees of subsequent Year(s)/ Semester(s) to obtain the NOC from SMCW/ SIU.
4. I understand that Academic Fees of subsequent year shall increase by 10% every year during the entire period (duration) of my MBBS Programme at SMCW and undertake to pay increased fees.
5. I undertake to pay all my fees to Symbiosis Medical College for Women through banking channels only and NOT IN CASH
6. I understand that Hostel/ Mess Fees of subsequent Year(s)/ Semester(s) shall also increase by 10% on a yearly basis and I undertake to pay the revised Hostel/ Mess Fees as prescribed from time to time.
7. I understand that university examination fees are levied per subject (3 subjects in phase 1, 3 subjects in phase 2, 4 subjects in phase 3 part 1 and 4 subjects in III Mbbs part 2). The examination fees are not part of academic tuition fees and are to be paid after a student attains eligibility to appear for University examination.
8. I undertake to pay the Repeater/ Backlog examination fees as prescribed and revised from time to time.
9. I understand that government taxes would be additional as and when applicable and I undertake to pay them as and when required.
10. I understand that the College has relied upon documents submitted by me to grant provisional admission and undertake that I have submitted the true and genuine documents to ascertain eligibility for provisional admission and solely responsible for the consequences for false information, falsified/ fraudulent/ forged documents etc., and aware that it will amount to cancellation of admission including legal consequences.
11. I undertake to abide by the Refund Rules as prescribed by the DGHS/ MCC/ MCI/ SIU.
12. I undertake to abide by the Guidelines/ Rules/ Regulations pertaining to Admission, Academics, Examination, Anti-Ragging, Anti-Discrimination and Anti-Sexual Harassment including Code of Conduct in accordance with the MCI/ NMC/ SIU, etc.
13. I undertake that I have adequate financial resources to pay my wards fees on a regular basis as required. I understand and undertake that, reasons like inability to obtain loan, loss in business, loss of employment and other such reasons will not be offered by me for not paying the prescribed fees

Place:_____

Date: _____

Candidate's Name:_____

Declarations and Bonds to be furnished by students and parents

(Declaration by Parent/ Guardian)

To pay the fees for A.Y. 2025-26 including subsequent Year(s)/ Semester(s) as prescribed from time to time

I, _____,

Age: _____, Address: _____

_____, having been admitted to the MBBS Programme with Symbiosis Medical College for Women, do hereby declare and undertake by this Bond as under:

1. I know that my ward Ms. _____ has secured admission to pursue MBBS Programme at Symbiosis Medical College for Women ["SMCW"], a Constituent of Symbiosis International [Deemed University].
2. I have read the Prospectus of MBBS Programme at Symbiosis Medical College for Women ["SMCW"] carefully and understood all the applicable Rules and Regulations prescribed by MCI/ NMC/ MCC/ SIU.
3. I have read the contents of the Undertaking given by Ms. _____ which she has read and signed in my presence.
4. I have in particular read and understood the Bond / Undertaking about the payment of remaining fees, on withdrawal of admission by my daughter under any of the circumstances as mentioned above, including a) on account of voluntary withdrawal; b) on account of disciplinary action; c) on account of submission of false / forged documents etc. I have understood that SMCW/ SIU/ Symbiosis has the right to recover the remaining fees, under all / any such circumstances.
5. I undertake to SMCW/ SIU/ Symbiosis that I shall be jointly and/or severally liable to pay the amount of remainder, as then payable, on demand to SMCW/ SIU/ Symbiosis, as the case may be, at the time of withdrawal of admission. I also agree that in case I fail to pay the remaining fees, on demand, then SMCW / SIU, will be entitled to take any appropriate legal/ administrative action jointly and/ or severally against me and my daughter/ ward.
6. I further agree and undertake that the undertaking/ declaration given by Ms. _____ and me is irrevocable and shall remain in full force and effective till the payment of remaining fees and SMCW/ SIU/ Symbiosis would be fully authorised to take any lawful action for realisation/ recovery of the amount of the remaining fees.

Place: _____

Date: _____

Parent's/ Guardian's Name

Student Services and Campus Amenities

The University constantly strives to enhance the campus ambience for greater student experience. The following student services and campus amenities are provided.

- a. Student Affairs Services
 - b. Library Services
 - c. Learning Management System & other Online learning platforms
 - d. Academic Mentoring & Psychological Counselling Services
 - e. Career Counselling Services
 - f. Accommodation (Hostel), Mess and Canteen
 - g. Wi-Fi Services
 - h. House Keeping Services
 - i. Health Care Services
 - j. Campus-wide round the clock security services with CCTV monitoring
 - k. 24 X 7 electricity services
 - l. Campus-wide-RO water facilities
 - m. Multi-Gym, Sports, Recreation and Wellness Centres
 - n. Shopping Complex/supermarkets having coffee shops, restaurants, beauty salons, student travel shops, newspapers, pharmacy.
 - o. Common room with TV and Indoor games facilities.
 - p. ATM on campus
 - q. Xeroxing, reprography, stationery shops
 - r. SPA
 - s. Laundry service
- For more details go through our 360° Campus Tour; Click Link Below
<https://www.siu.edu.in/symbiosis-360-tour.php>
 - Read about our Bio-Diversity measures at link below
<https://www.siu.edu.in/biodiversity.php>
 - Read more about our Department of Sports Recreation and Wellness at link below
<https://www.siu.edu.in/sports.php>
 - Facebook - <https://www.facebook.com/smcwofficial/>
 - Instagram- https://www.instagram.com/smcw_official/?hl=en



Marigold Girls Hostel



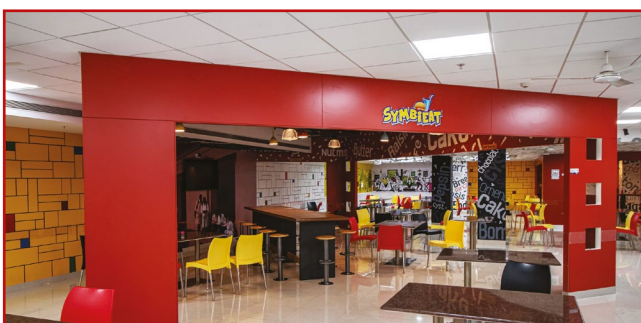
Girls Hostel Room



Table Tennis at SIU



Swimming Pool at SIU



Symbiate Cafeteria, SMCW



Library , SMCW

Anti-Ragging, Anti-Discrimination, Sexual Harassment, Anti-tobacco, Anti-smoking, Anti-drug/ substance abuse measures

- i) The guidelines and norms as mandated by respective statutory bodies, Supreme Court of India and GoI pertaining to Anti-Ragging, Anti-Discrimination, Anti-Sexual Harassment, Anti-tobacco, Anti-smoking, Anti-drug/ substance abuse and other Anti-social activities are strictly implemented and monitored by 24 X 7 basis.
- ii) All the students getting admitted to Symbiosis Medical College for Women will sign an undertaking stating that they will abide by the rules and regulations as stated above.
<https://www.antiragging.in/>

Grievance Redressal Mechanism

- Symbiosis Medical College for Women has constituted a "Grievance Redressal Committee" (GRC), to redress and effectively & resolve complaints, representations and grievances related to any of the issues of admissions and the matters that may arise thereafter.

Caution Notice

- i) Admission to MBBS Programmes at SMCW/Symbiosis International (Deemed University) is strictly on merit basis based on the criteria and processes prescribed by the MCI/ NMC/ DGHS/ MCC/ SIU.
- ii) All aspirants/ parents are hereby notified that some individuals/ organisations are giving/ making false and misleading advertisements/ claims in newspapers, websites, social media platforms that they can ensure admission to Symbiosis International (Deemed University) and are also charging fees for the same.

In this regard, Symbiosis International (Deemed University) requests the aspirants/ parents to refrain from entering into any transactions with such elements. Symbiosis International (Deemed University) has not appointed any individual/ agency/ organisation to make such assurances on its behalf. It is a matter of policy that Symbiosis International (Deemed University) does not charge capitation fee for admission from students and this is widely and prominently published as well on all the relevant places like Prospectus, Website, Booklet etc.

- iii) Despite this notice, if any aspirants / parents still proceed with or enter into any transaction with such elements, they would be doing so at their own risk and cost. Symbiosis International (Deemed University) further notifies that any aspirant attempting to approach Symbiosis International (Deemed University) for admission through or at the instances of such agents will be permanently debarred from admission to all the courses and programmes at Symbiosis International (Deemed University).





Anandi Gopal Scholarship Awardees 2024



Students in central courtyard, SMCW



Left: Dr. Rajiv Yeravdekar, Dean-FoHS, SIU presenting White Coat to student. Centre: Dr. Vijaya Sagar, Dean-SMCW presenting cadaveric oath certificate to students. Right: Anatomy Museum



Cadaveric Oath taking Ceremony 2024

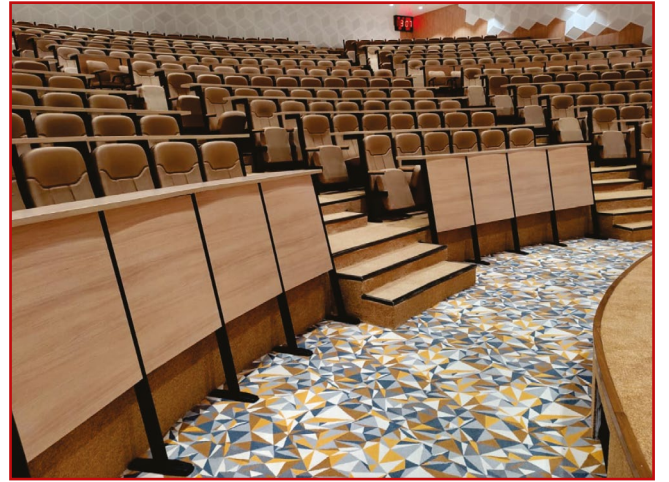


Tree Plantation 2024

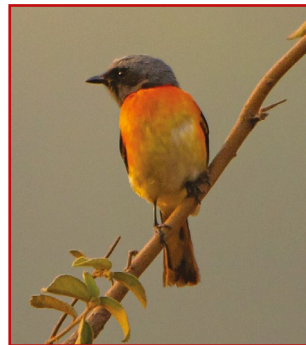
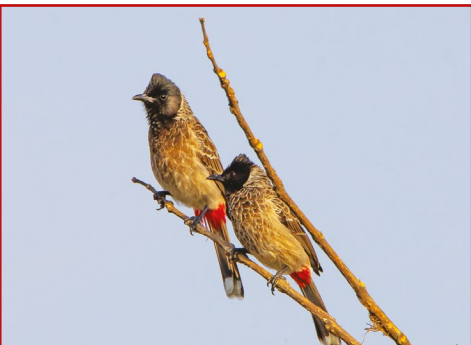


Symbiosis Aarogya Dham inaugurated by Shri. Narendra Modi, Hon'ble Prime Minister of India.- 06 March 2022





Student Group Activities and Moringa Auditorium



Colourful Birds and Butterflies at SIU Campus



SYMBIOSIS MEDICAL COLLEGE FOR WOMEN

Gram: Lavale, Tal: Mulshi, Dist: Pune, Maharashtra, India Pin: 412115

For further details, please contact:

Telephone

+91-20-6193 0271 +91-20-2810 0016
+91-20-6193 0272 +91-20-2810 0017
+91-20-6193 0273 +91-20-2810 0018
+91-20-6193 0274 +91-20-2810 0019
+91-20-6193 0275 +91-20-2810 0020

WhatsApp: +91-73501 83183



For M.B.B.S admission
and other details scan or
visit: www.smcw.edu.in

E-mail: admissions@smcw.siu.edu.in

