



Shaping the next generation of
clinicians, academicians,
and medical leaders

MD/MS

Postgraduate Programs



॥वसुधैव कुटुम्बकम्॥

SYMBIOSIS MEDICAL COLLEGE FOR WOMEN SYMBIOSIS UNIVERSITY HOSPITAL & RESEARCH CENTRE

A constituent of SYMBIOSIS INTERNATIONAL (DEEMED UNIVERSITY)

(Established under section 3 of the UGC Act, 1956) | Re-accredited by NAAC with 'A++' | Awarded Category - I by UGC

PROSPECTUS

2025-2026



MD/MS

Postgraduate Programs

PROSPECTUS 2025-2026





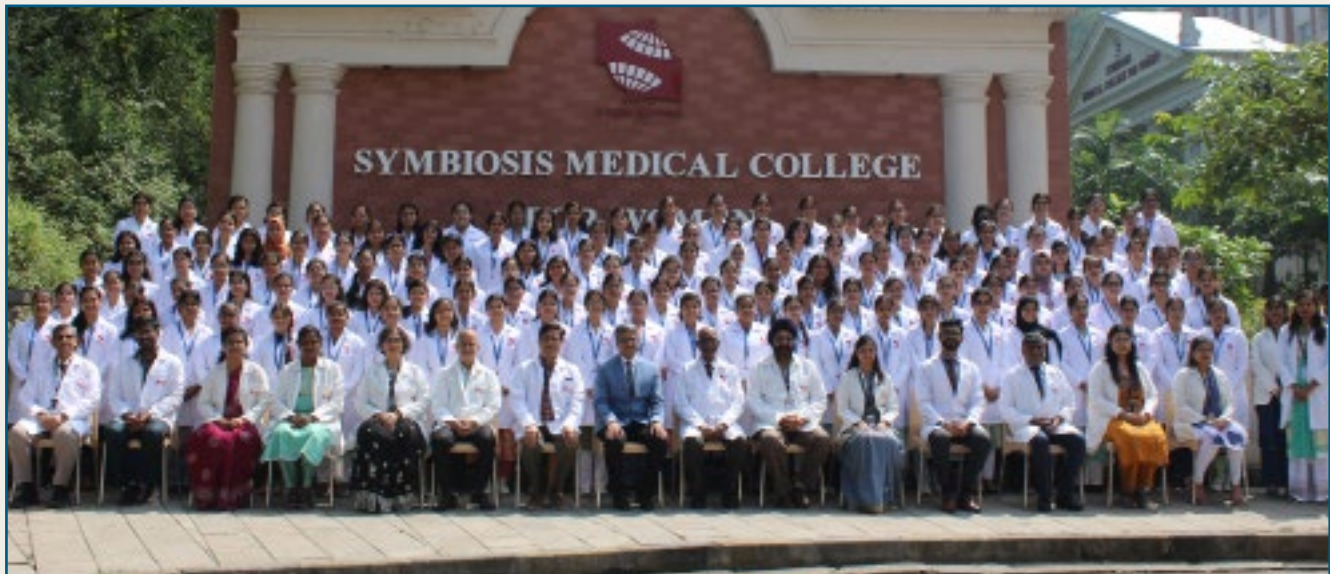
Dr. Anandibai Gopalrao Joshi

(The first Indian Lady Doctor)

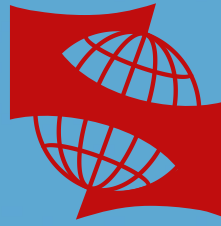
31 March 1865 – 26 February 1887

Index

S. No.	Contents
1.	Symbiosis
2.	An incident that ignited the foundation of Symbiosis
3.	Message from Chancellor, SIU
4.	Message from Pro Chancellor
5.	Message from Vice Chancellor
6.	Message from the Provost, Faculty of Medical & Health Sciences
7.	Message from the Dean, SMCW & SUHRC
8.	Symbiosis International (Deemed University)
9.	International Collaborations
10.	Symbiosis Medical College for Women (SMCW)
11.	Symbiosis University Hospital and Research Centre (SUHRC)
12.	Admission
	A. Eligibility for Admission to Doctor of Medicine (MD)/ Doctor of Surgery (MS)
	B. Admission Process
	C. Documents Required
	D. MD/ MS Seat Distribution (AY 2025-26)
	E. Stipend
	F. Fees Structure (Academic Year 2025-26)
	i. Payment of Fees
	ii. Scholarship for Pre and Para Clinical Courses
	iii. Examination Fees
	G. Refund Rules/ Policy
	H. Course Details
	I. Leave Rules
	J. Amenities and Student Services
	K. Hostel & Health Checkup
	L. Grievance Redressal
	M. Prevention, Prohibition and Redressal of Sexual Harassment
N. Anti-Ragging	
O. Discipline	
P. Caution Notice	
Q. Undertaking and Bond Payment of Fees Bond (Student and Parent) Service Bond (Student)	
	Annexure 1: Medical Fitness Certificate
	Annexure 2: Declarations and Bonds to be furnished by student
	Annexure 3: Declarations and Bonds to be furnished by Parent
	Annexure 4: Undertaking & Service Bond by Student



Induction 2024-2025



॥वसुधैव कुटुम्बकम्॥

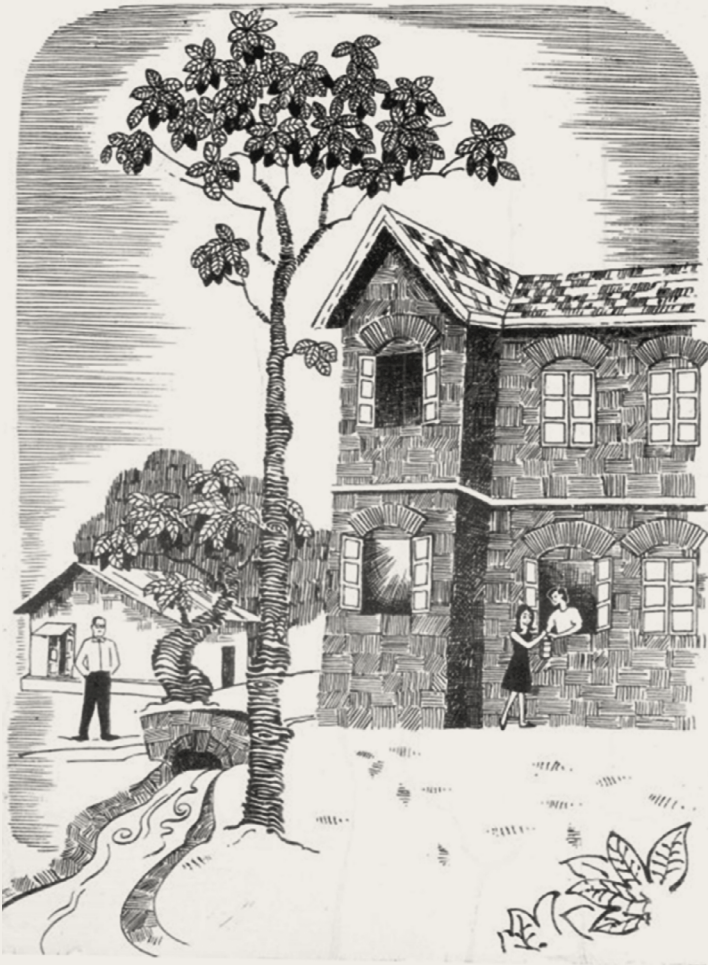
SYMBIOSIS

Inspired by the ideals of '*Vishwa Bharati*' articulated by Gurudev Rabindranath Tagore and '*Antar Bharati*' championed by Sane Guruji, Symbiosis was founded in 1971 by Prof. Dr. S. B. Mujumdar with the vision of nurturing international students and fostering global harmony. Its core philosophy, '*Vasudhaiva Kutumbakam*'—the world is one family—is reflected in an inclusive academic culture that embraces diversity and supports students across cultural, national, and socio-economic backgrounds.

In its continuous pursuit of academic excellence and social development, Symbiosis has expanded beyond Symbiosis International (Deemed University) to establish a comprehensive educational ecosystem encompassing K-12 schools, the Symbiosis College of Arts & Commerce, teacher education institutes, and cultural centres such as the Dr. Babasaheb Ambedkar Museum and Memorial and the Afro Asian Cultural Museum. Today, with a vibrant community of over 60,000 students, Symbiosis stands as a testament to its commitment to holistic education and global citizenship.



A Foreign Affair that Founded Symbiosis



The journey of a thousand miles begins with a single step. But, it is the first step that involves deliberation and much hesitation. The Symbiosis journey however began with a surge of enthusiasm spurred on by an incident that, in itself, makes a poignant tale. As related by Hon'ble Chancellor Prof. S. B. Mujumdar himself, "It was an afternoon on a hot day. I was standing near the window of my house overlooking the first hostel block, of which I was the rector. A strange thing happened. A girl walked up to the window of the boys' hostel room, quickly handed over something and disappeared. My curiosity was aroused and I kept watching the girl walking up to the window day after day and suspected, like any other rector would, that an affair was afoot.

So one day, I made up my mind and walked up to the door and knocked. When the door opened, I saw a Mauritian student lying in bed. His face was pale and his eyes seemed to have sunken low. I was puzzled!

When I turned to the boy for an explanation, he said, 'Sir, I have an attack of jaundice & I'm feeling extremely weak. I cannot stand up, nor walk a few steps. A girl from my country brings me food. However, since

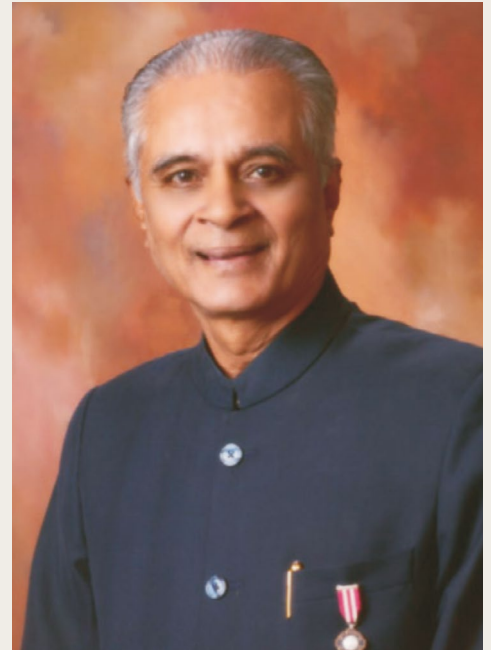
ladies are not allowed to enter the boys' hostel, she hands over the tiffin box through the window'

I was stunned. After all, it wasn't the type of 'affair' I had expected. I was very much pained & decided something had to be done about this. That was the instance, the golden moment that Symbiosis was born". 'Symbiosis' is a term in life science, meaning 'living together of two different organisms, for the benefit of each other'. Dr. Mujumdar, himself a professor of botany, thought this name apt for the institution.

Thus, the institution was founded to alleviate the problems faced by foreign students coming to India. At the time, these problems included - accommodation, meals, medical care, guidance, coaching, information about the city, amongst others.

Symbiosis has come a long way since then. Today it is home to students from more than 85 different countries. These students are offered the best learning resources, industry exposure, a strong international students' alumni network, a global recognition, and above all, a truly enriching Indian experience.

Message from the Hon'ble Chancellor



Hon'ble Prof. (Dr.) S. B. Mujumdar

Chancellor, Symbiosis International (Deemed University)
Founder & President, Symbiosis Society.
(Awarded Padma Bhushan & Padma Shri
by President of India)

It gives me immense happiness to write this message for students aspiring to pursue postgraduate medical education at Symbiosis Medical College for Women, a state-of-the-art institution, at a time when healthcare and medical sciences are undergoing rapid transformation. The commencement of Postgraduate Courses from the Academic Year 2025–26 marks yet another milestone in the journey of Symbiosis Medical College for Women and reflects our commitment to nurturing excellence at every stage of medical education.

The 21st century calls for globally competent professionals who are responsive to change, multinational in perspective, multilingual and multicultural in spirit, technologically adept, and capable of solving complex problems. Postgraduate education is the crucible where these qualities are refined, enabling doctors to become specialists, leaders, and innovators in their chosen fields.

Symbiosis continues to be inspired by the ideals of Vishwa Bharati of Gurudeva Rabindranath Tagore, Antar Bharati of Sane Guruji, and the philosophy of Vasudhaiva Kutumbakam (The World is One Family). These values have guided our growth over five decades and remain the foundation of our academic and social mission.

What began as a Cultural Society in 1971 has today evolved into one of the most sought-after universities in India and abroad, comprising eight faculties and imparting education in diverse disciplines to over 18,000 students, including those from 85 different countries.

In establishing a medical college exclusively for women, Symbiosis sought to address the significantly low representation of women in allopathic medicine. The inspiring life story of Dr. Anandi Gopal Joshi, India's first woman doctor, and our ethos of women's empowerment played a vital role in the creation of Symbiosis Medical College for Women (SMCW). With the launch of postgraduate programs for women and men, we now take this vision forward-empowering both to excel as specialists, researchers, and leaders.

Our world-class infrastructure, eco-friendly environment, diverse habitat, evidence-based and ethically driven healthcare services, learner-centred pedagogy, and distinguished faculty remain the hallmarks of our commitment to stakeholders. At the postgraduate level, these strengths are further enriched by advanced clinical exposure, research opportunities, and mentorship that prepare students for national and global leadership in healthcare.

The unique ambience at Symbiosis will give you the feeling of being part of an extended universal family. I am confident that you will make an informed choice to join Symbiosis and contribute to the noble profession with competence, compassion, and conviction.

With my best wishes, I extend you a warm welcome!

**Award from Government of India for
Contribution in the field of Education**



Prof. (Dr.) S. B. Mujumdar receiving 'Padma Shri' from
His Excellency Dr. A.P.J. Abdul Kalam, President of India
(2005)

**Award from Government of India for
*Contribution in the field of Education***



Prof. (Dr.) S. B. Mujumdar receiving 'Padma Bhushan' from
Her Excellency Smt. Pratibha Patil, President of India
(2012)

Message from the Pro-Chancellor



Dr Vidya Yeravdekar
Pro Chancellor, SIU
Principal Director, Symbiosis

Greetings from Symbiosis International (Deemed University)!

Let me first congratulate you on successfully clearing the rigorous NEET-PG examination and securing admission into the Postgraduate programs at Symbiosis Medical College for Women (SMCW). This achievement marks the beginning of an exciting new phase in your medical journey, where you will advance from foundational learning to specialisation, research, and leadership in healthcare.

You are joining a prestigious University, consistently ranked among the top institutions in India by the Government of India. The establishment of postgraduate courses in the academic year 2025-26 coincides with Symbiosis' Golden Jubilee celebrations, making this milestone even more significant.

Our Founder and Chancellor, Dr. S. B. Mujumdar, was deeply inspired by the life of Dr. Anandi Gopal Joshi, India's first woman physician, whose story continues to guide our vision of empowering women in medicine. With postgraduate education, we now extend this vision further - preparing women and men doctors to excel as specialists, researchers, and leaders in the global healthcare community.

The Symbiosis University Hospital and Research Centre, our teaching hospital, provides the ideal environment for advanced clinical training. Here, you will be mentored by expert faculty who will help you develop deep insights into your chosen discipline, sharpen your clinical acumen, and cultivate the spirit of inquiry essential for postgraduate study.

As members of the larger multidisciplinary ecosystem of Symbiosis International (Deemed University), you will benefit from interactions beyond medicine-with peers from Engineering, Management, Media, Biotechnology, Culinary Arts, and Photography. This unique environment fosters innovation, creativity, and holistic development. Our campus also offers excellent sports, recreation, and wellness facilities, ensuring that your years at SMCW will be balanced, enriching, and memorable.

I am confident that the postgraduate years you spend here will not only shape your professional expertise but also nurture your personal growth, preparing you to contribute meaningfully to society and the world.

With my best wishes, I warmly welcome you to the Symbiosis family!

Message from the Vice Chancellor



Dr. Ramakrishnan Raman
Vice Chancellor, SIU

Dear Students and Parents,

It gives me great pleasure to announce the commencement of Postgraduate Programmes at Symbiosis Medical College for Women (SMCW) from the Academic Year 2025–26. This important milestone reflects our unwavering commitment to the vision of our Founder and Chancellor, Prof. Dr. S. B. Mujumdar, and to the founding philosophy of SMCW as a pioneering institution dedicated exclusively to women's medical education. Inspired by the legacy of Dr. Anandi Gopal Joshi, India's first woman physician, the college continues to stand as a symbol of empowerment, excellence, and inclusion.

Located at the serene Lavale campus of Symbiosis International (Deemed University), SMCW offers a robust academic ecosystem supported by state-of-the-art infrastructure, advanced learning resources, and the Symbiosis University Hospital and Research Centre. The introduction of postgraduate programmes across multiple specialities creates an enriched environment that promotes academic rigour, research innovation, and comprehensive clinical training, while instilling strong ethical and professional values.

Our experienced and accomplished faculty are deeply committed to mentoring postgraduate students, nurturing them into competent specialists, researchers, and healthcare leaders. We strive to develop women doctors who are not only clinically proficient but also compassionate, ethical, and socially responsible, capable of contributing meaningfully to healthcare systems at national and global levels.

At SMCW, women empowerment through education remains central to our mission. We firmly believe that postgraduate medical education plays a vital role in advancing healthcare, fostering innovation, and driving positive social change. By empowering women doctors, we contribute to the well-being of families, communities, and society at large.

I invite you to be a part of this transformative journey of advanced learning and discovery, as together we work towards shaping a healthier and more equitable future.

Message from the **Provost, Faculty of Medical & Health Sciences**



Dr. Rajiv Yeravdekar

Provost, Faculty of Medical & Health Sciences, SIU
Ex-Member, BoG, Medical Council of India (MCI)

I am pleased to welcome you to the Postgraduate programmes at Symbiosis Medical College for Women (SMCW). At the outset, I extend my warm congratulations on your success in the NEET-PG examination—a commendable achievement that reflects your dedication, perseverance, and hard work through a demanding and competitive process.

By choosing to pursue your postgraduate medical education at Symbiosis International (Deemed University), you have selected an institution recognised for academic excellence, innovation, and holistic development. Established in accordance with the vision of our Founder and Chancellor, SMCW was conceived to empower women in the field of medicine. With the introduction of MD/MS programmes for both women and men, the institution now advances this vision further by nurturing specialists who exemplify professional competence, compassion, and ethical practice.

The postgraduate academic ecosystem at SIU is designed to integrate rigorous clinical training, research engagement, and all-round development. The tranquil environment of the Lavale campus, the collaborative presence of sister institutions, and the attached Symbiosis University Hospital & Research Centre (SUHRC) together offer an enriching setting that supports both professional excellence and personal growth.

I am confident that your postgraduate journey at SMCW will be a defining and fulfilling chapter—one that will shape your future as a medical professional and leave you with lasting memories.

Welcome to Symbiosis.

Message from the Dean, SMCW & SUHRC



Dr. V. K. Sashindran

MBBS, MD (Med), DNB (Med), M.Sc. (Inf Disease)
Dean, SMCW & SUHRC

It is with great pride and joy that I extend a warm welcome to the MD/MS students of Symbiosis Medical College for Women (SMCW) and its attached teaching hospital, the Symbiosis University Hospital and Research Centre (SUHRC), under the umbrella of Symbiosis International (Deemed University). With the commencement of postgraduate programs from the academic year 2025–26, SMCW and SUHRC will serve as the crucible where today's young learners—both women and men—are transformed into tomorrow's specialist doctors, researchers, and healthcare leaders.

Medical education in the new millennium is undergoing a paradigm shift, shaped by technological advancements, global integration, and evolving societal needs. At SMCW, we are driven by the passion to ensure that our graduates are globally competent professionals—capable of leading, innovating, and serving with empathy. Rooted in the philosophy of Vasudhaiva Kutumbakam (The World is One Family), our institution is committed to nurturing exemplary citizens who are socially conscious, ethically grounded, and locally responsive while remaining globally relevant.

Cultivating diversity is a hallmark of Symbiosis. At SMCW and SUHRC, we provide a student-centric and community-oriented learning environment, enriched by opportunities for advanced clinical training, interdisciplinary research, and holistic development. We strive to leverage emerging technologies to create a world-class immersive and experiential learning ecosystem. Beyond academics, students will find abundant opportunities to engage in cultural, social, and extracurricular activities that foster all-round personality development—an integral part of the Symbiosis ethos.

I am confident that your postgraduate journey here will be both intellectually stimulating and personally fulfilling. You will emerge as outstanding medical professionals across various specialities, ready to serve society and the nation with competence, compassion, and conviction.

With my best wishes for a glorious career. Jai Hind!

Symbiosis International (Deemed University)



Symbiosis International (Deemed University) was established in 2002. Its beautiful campus is nestled on 400+ acres of land at Lavale on the outskirts of the city of Pune, Maharashtra, India. The University's name captures the quintessence of the relationship with international students, a mutually beneficial bond between Indian and International student communities. Today, the University has students from all States of India and over 85 countries across the globe. The University has established 45 Constituents, 9 Departments of Skills and Continuing Education, 13 Research Centers, and 13 Support Departments. The University offers programs at Undergraduate, Postgraduate and Doctoral levels under the Faculties of Law, Management, Computer Sciences, Health Sciences, Media Communication, Humanities & Social Sciences, Engineering, Architecture & Design and Education.

SIU attracts students from all Indian states and international students from over 85 countries. The university's qualified and dedicated faculty are committed to disseminating knowledge and transforming students into qualified, skilled, and responsible global citizens. SIU's strong academic reputation has led to its selection as a participating institution in the Government of India's "Study in India" Program. With nearly 100% placements, the university has become a preferred destination for learners from across India and abroad.

SIU's research credentials are robust, with numerous Ph.D. students, publications, patents, and R&D projects funded by government and non-government organizations. The Symbiosis Centre for Research and Innovation (SCRI) spearheads research initiatives, fostering a vibrant research culture through well-equipped laboratories and research centers in fields like applied artificial intelligence, medical imaging, behavioral science, stem cell research, urban studies, climate change and sustainability, waste management, and nanotechnology. International collaborations further enhance SIU's research capabilities.

To foster entrepreneurship and innovation, SIU has established the Symbiosis Centre of Entrepreneurship and Innovation (SCEI), funded by the Department of Science & Technology, Government of India. The university also promotes women's entrepreneurship through a collaboration with NITI Aayog.

Internationalization is at the heart of SIU's ethos. The Symbiosis Centre for International Education (SCIE) facilitates international programs and manages centers like the Symbiosis Centre for India Australia Studies (SCIAS), Symbiosis Centre for European Studies (SCES), and the Symbiosis Centre for Higher Education Research and Policy Advocacy (SCHERPA). The Centre for Engagement with Africa (SCEA) focuses on capacity building through scholarships and initiatives.

SIU's commitment to social responsibility is evident in its Symbiosis Community Outreach Programme and Extension (SCOPE) Centre. SCOPE has adopted 35 villages, providing healthcare, sanitation, waste resource management, finance & banking, digital literacy, legal counseling, and scholarships. Family Doctor Clinics, Mobile Medical Units, and Mobile Digital Literacy Vans cater to these communities. As a Health Promoting University, SIU has established the Symbiosis Medical College for Women (SMCW), the Symbiosis University and Hospital Research Centre (SUHRC), and centers like the Symbiosis Centre for Emotional Wellbeing (SCEW).

Beyond academic excellence, SIU has received several accolades, such as being recognized as a 2000-Watt Smart City and receiving the Asia Pacific Quality Label (APQL). It is also a permanent member of the Global University Network for Innovation (GUNi).

Symbiosis International (Deemed University) has evolved into a global hub of education and innovation, embodying the principles of international understanding, quality education, and social responsibility. With its diverse programs, world-class faculty, and unwavering commitment to research and community engagement, SIU continues to shape the lives of students and contribute to the betterment of society.

Recognition/ Accreditation/ Rankings:

Symbiosis Medical College for Women (SMCW) was established with all necessary statutory approvals and was granted permission by the erstwhile Medical Council of India (MCI) in 2020 to begin the MBBS programme with an annual intake of 150 students. Advancing its academic offerings, the National Medical Commission (NMC) has accorded the Letter of Permission (LoP) for the introduction of Postgraduate Degree Programmes (MD/MS) in 17 broad specialties, commencing from the Academic Year 2025–26, in line with the applicable Postgraduate Medical Education Regulations.

SMCW operates under the aegis of Symbiosis International (Deemed University) (SIU), established under Section 3 of the UGC Act, 1956. SIU enjoys Category-I status conferred by the University Grants Commission (UGC) and has been re-accredited with an ‘A++’ grade by NAAC. The University is consistently ranked among India’s premier institutions by NIRF and ARIIA, and also holds a strong global presence through the Times Higher Education (THE) and QS World University Rankings.

The affiliated teaching hospital, Symbiosis University Hospital and Research Centre (SUHRC), holds accreditations from NABH and NABL, reflecting its adherence to nationally benchmarked standards of healthcare delivery and diagnostic services.



SIU Helipad



SIU Play Ground

International Collaborations



Internationalisation is a core pillar of Symbiosis International (Deemed University) (SIU), reflected in its strong global partnerships and collaborative academic ecosystem. SIU has established strategic collaborations with over 80 universities worldwide, spanning countries such as Australia, the United States, the United Kingdom, Germany, France, Sweden, Portugal, the Netherlands, Canada, Singapore, and Japan. These partnerships facilitate a wide range of initiatives, including scholar residency programmes, jointly funded and managed research centres, dual-degree and pathway programmes, and collaborative research projects that strengthen global academic linkages.

SIU actively engages with leading global networks such as the Global University Network for Innovation (GUNI) and OBREAL Global, contributing to thought leadership, policy dialogue, and the reimagining of the societal role of universities on a global scale.

The Symbiosis Centre for International Education (SCIE) serves as the central hub for international activities across SIU, facilitating both outgoing and incoming student mobility. Outgoing initiatives include semester exchange programmes, summer and winter schools, and international study tours, enabling students to gain global exposure and academic enrichment. Incoming mobility is supported through the Semester Exchange Programme, allowing international students to experience SIU's academic and cultural environment. The Study India Programme is a distinctive initiative that offers international students an immersive experience by combining academic learning with deep engagement in India's culture, heritage, and contemporary perspectives.

SIU's commitment to internationalisation also extends to its faculty, who actively participate in international teaching, research collaborations, and academic exchange programmes. These engagements enhance global exposure, foster cross-cultural scholarship, and play a significant role in strengthening SIU's international academic presence and long-term global partnerships.

Symbiosis Medical College for Women



The Symbiosis Medical College for Women (SMCW) is the vision of Prof. Dr. S. B. Mujumdar, Founder and Chancellor of Symbiosis International (Deemed University) [SIU]. Inspired by the biographical film on India's first lady doctor, Anandibai Joshi, he conceived the idea of establishing a medical college exclusively for women.

Anandibai Joshi remains a beacon of inspiration for generations of women. Born in Pune, she became the first Indian woman to earn a doctorate in medicine. Married at the age of nine to Gopalrao Joshi, she endured personal tragedy when her infant son died due to a lack of medical care. This loss motivated her to pursue medicine. At 19, she travelled to New York for training, overcoming cultural and health challenges, and graduated with an MD in 1886. Queen Victoria personally congratulated her achievement. On returning to India, she became the nation's first lady physician.

In her honour, SMCW offers the Anandi Gopal Scholarship Scheme, granting full fee waivers to the top five NEET-UG rankers admitted to the college.

SMCW was established with the objective of empowering women and contributing to nation-building by increasing the number of female physicians. Prof. Mujumdar has long emphasised that only 17% of practising allopathic doctors in India are women, underscoring the need for greater representation.

Located at SIU's scenic Lavale campus near Pune, SMCW and its attached Symbiosis University Hospital & Research Centre (SUHRC) provide state-of-the-art infrastructure. Sister institutes and research centres-including SIT, SSBS, SCSCR, SCMIA, SCEW, SCAAI, SCBS, SCNN, and SCWRM-enrich academic, clinical, and research opportunities.

From the Academic Year 2025–26, SMCW and SUHRC have commenced Postgraduate (MD/MS) programmes in 18 specialities. This marks another milestone in the institution's journey, expanding its academic scope from undergraduate to advanced medical education. The PG programmes are designed to nurture specialist physicians and researchers, strengthening Symbiosis' contribution to healthcare excellence and nation-building.

SMCW is among the first fully residential medical colleges exclusively for women in India, with an annual intake of 150 students. Its faculty are highly qualified, clinically competent, and committed to evidence-based education, modern pedagogy, and interdisciplinary approaches. They serve not only as academicians and clinicians but also as mentors for holistic student development.

The campus features advanced classrooms, IT-enabled laboratories, Wi-Fi facilities, and a Central Library with over 6,680 books and journals. SUHRC offers extensive clinical material and advanced diagnostic facilities, including a 128-slice CT, 3 Tesla MRI, Cath Lab, Dialysis, and Endoscopy units. Community-based learning is further strengthened through Primary Health Centres, an Urban Health Training Centre, and a Rural Health Training Centre.



Symbiosis University Hospital and Research Centre



The Symbiosis University Hospital & Research Centre (SUHRC), situated within the scenic Lavale campus of Symbiosis International (Deemed University), is a 900-bedded tertiary care teaching hospital attached to SMCW.

With the launch of PG (MD/MS) programmes from Academic Year 2025–26, SUHRC has emerged as a centre of excellence for postgraduate medical education, offering extensive clinical exposure and advanced learning opportunities.

The hospital houses core disciplines such as Medicine, Surgery, and Obstetrics & Gynaecology, along with additional specialities including Paediatrics with Neonatology (NICU), Orthopaedics, ENT, Ophthalmology, Gastroenterology, Urology, Nephrology with dialysis, Pulmonology, and Critical Care Medicine.

Super-speciality services in Cardiology with Cath Lab, Oncology, Neurology, and advanced diagnostics further strengthen training.

Facilities include:

- Full-fledged Pathology Lab
- Modern Blood Bank
- 24×7 imaging with 3T MRI and 128-slice CT
- 107 ICU beds
- 20 modular operation theatres
- Advanced surgical support

The hospital manages 1,350–1,700 outpatients daily with over 80% bed occupancy, ensuring diverse case material.

SUHRC emphasises protocol-driven, evidence-based practice, with ethics, transparency, and patient safety as priorities. Its multidisciplinary environment, high patient volume, and cutting-edge infrastructure provide PG students with a robust platform to develop clinical competence, research orientation, and global readiness.

Admission

A. Eligibility for Admission to Doctor of Medicine (MD)/ Doctor of Surgery (MS)

- i. All admissions are being made based on the NEET-PG eligibility and counselling by the Directorate General of Health Services (DGHS)/ Medical Counselling Committee (MCC). The admission policy is formulated based on regulations issued by NMC, DGHS, MCC, and the Hon'ble Supreme Court of India as notified from time to time.
- ii. Admissions for the first-year MD/MS Programme shall be done as per the eligibility guidelines notified by NMC letter No. N-P016(11)/2/2023-PGMEB-NMC dated 06 Sept. 2023, called the Post Graduate Medical Education Regulations - 2023 (PGMER-23).
- iii. In addition to eligibility requirements at the qualifying examination as notified by NMC/ MCC, the candidate must qualify in NEET-PG and appear in the All India Merit List prepared by MCC. Admissions shall be strictly from this list.
- iv. Candidates must participate in the Admission Counselling Process conducted by DGHS-MCC as per guidelines of the Supreme Court/Ministry of Health & Family Welfare/Government of India/MCC/NMC.

For more details: <https://neet.nta.nic.in/>

Eligibility Table

Sr. No.	Criterion	Details
1	Qualifying Examination	Candidate must possess an MBBS Degree or Provisional MBBS Pass Certificate issued by NMC recognized medical college.
2	Internship	Must have completed or be likely to complete the one-year CRRI on or before 31 July 2025 (or as per NMC/MCC schedule).
3	Registration	Must possess Permanent or Provisional Registration Certificate issued by NMC or State Medical Council.
4	Entrance Exam	Must have qualified NEET-PG 2025 and met the Minimum score in percentile/cut-off announced by NBE/NMC.
5	Foreign Graduates	Must have qualified the FMGE screening test.

B. Admission Process

- i. All admissions for MD/ MS Programme at SMCW will be done through NEET-PG, based on merit (NEET Rank) through MCC.
- ii. 100% seats of MD/ MS Programme at SMCW will be filled through counselling conducted by DGHS/ MCC.
- iii. Counselling Rounds (General/ NRI), including Mop-Up Rounds, shall be conducted as per DGHS/ MCC norms. Rules/guidelines will be available on MCC/ DGHS Websites.
- iv. Institutional Stray Vacancy Rounds (General/ NRI) shall be conducted as per DGHS/ MCC/ norms. If permitted, then by SMCW/ SIU norms.
- v. Seats filled under General Category in all Rounds shall be charged fees as per NMC/MCC/SIU norms.
- vi. Candidates seeking provisional admission under status retention/ upgradation must submit fees, original documents, and two attested sets as prescribed by DGHS/ MCC/ SMCW/ SIU within the stipulated schedule.
- vii. Failure to report/ pay fees/ submit documents within the stipulated time will result in cancellation of provisional admission.

- viii. Refund of fees shall follow NMC/ DGHS/ MCC/ SIU guidelines.
- ix. In case of name discrepancy (including spelling), the candidate must carry an original affidavit/ undertaking from the appropriate authority.
- x. At the time of provisional admission, all original documents must be submitted to the Office of the Dean, SMCW.
- xi. Candidates must submit specific documents for NRI category seats as mentioned in the “Documents Required” section of NEET PG 2025 brochure.
- xii. Candidates must register for private deemed universities by paying registration fees as notified by DGHS-MCC.
- xiii. After registration and payment, candidates will participate in Choice Filling, Locking, and Seat Allotment.
- xiv. DGHS-MCC counselling results will be notified on the DGHS-MCC website, including names of successful candidates and allotted colleges.
- xv. Candidates must visit the allotted colleges in person with all required documents.

C. Documents Required

Mandatory Documents

1. Admit Card of NEET PG 2025
2. NEET-PG 2025 Mark Sheet with All India Rank
3. Provisional Allotment Letter
4. SSC (10th) Passing Certificate, Marks Sheet/ School Leaving Certificate
5. HSC (12th) Passing Certificate and Marks Sheet
6. MBBS Degree Certificate
7. MBBS Marks Sheets
8. FMG Passing Certificate (If Applicable)
9. Internship Completion Certificate
10. Attempt Certificate
11. MBBS Registration Certificate
12. Gap/ Relieving Certificate (If applicable)
13. Nationality Certificate/ Valid Indian Passport
14. Birth Certificate/ 10th Passing Certificate
15. Aadhar Card/ Passport/ PAN Card/ Driving License
16. Passport Size Colour Photographs (8 Nos.)
17. Demand Drafts for Payment of Academic and Hostel Fees

Additional Mandatory Documents only for NRI Category

18. Passport Copy of Sponsor.
19. Embassy Certificate.
20. Sponsorship Affidavit.
21. Relationship Affidavit.
22. Passport of the Candidate and of Sponsor.



Other Documents

- 23) Medical Fitness Certificate (In the format provided in Annexure- I)
- 24) Transfer Certificate
- 25) Migration Certificate
- 26) Bonds for Fee Payment (By Student and Parent duly notarized on Rs. 500/- Stamp Paper separately)
- 27) Bond of Service (By Student duly notarized on Rs. 500/- Stamp Paper)
- 28) Gap Certificate (By Student duly notarized on Rs.100/- Stamp Paper on Format given by Notary, if applicable)

If Applicable

- 29) Caste Certificate
- 30) Caste Validity Certificate
- 31) Non Creamy Layer
- 32) Physical Disability Certificate (PWD)
- 33) EWS/SEBC Certificate

D. MD/ MS Seat Distribution (AY 2025–26)

Sr. No.	Subject	Total Seats	General	NRI
1	Anatomy	04	04	0
2	Physiology	02	02	0
3	Biochemistry	04	04	0
4	Pathology	04	04	0
5	Microbiology	04	04	0
6	Pharmacology	04	04	0



Sr. No.	Subject	Total Seats	General	NRI
7	Community Medicine	04	04	0
8	Surgery	04	03	01
9	Ophthalmology	03	02	01
10	ENT	03	02	01
11	Orthopaedics	04	03	01
12	Obstetrics & Gynaecology	04	03	01
13	Radiology	04	03	01
14	Medicine	04	03	01
15	Paediatrics	04	03	01
16	Psychiatry	02	02	0
17	Dermatology	02	01	01
18	Anaesthesia	04	03	01
Total		64	54	10

E. Stipend

Stipend payable to postgraduate residents:

- i. JR-1 =Rs 89,689/- per month
- ii. JR-2 =Rs 90,489/- per month
- iii. JR-3=Rs 91,279/- per month

D. Fees Structure (Academic Year 2025-26)

Sr. No.	Programme	Open/ General (₹)	NRI (USD)
1.	MD – Psychiatry	₹19,00,000	\$47,200
2.	MS – Otorhinolaryngology	₹22,15,250	\$55,000
3.	MD – Anaesthesiology	₹21,40,000	\$53,100
4.	MD – General Medicine	₹27,01,450	\$67,100
5.	MD – Paediatrics	₹25,74,110	\$63,900
6.	MS – General Surgery	₹23,31,010	\$57,900
7.	MS – Ophthalmology	₹23,31,010	\$57,900
8.	MS – Orthopaedics	₹25,74,110	\$63,900
9.	MS – Obstetrics & Gynaecology	₹25,74,110	\$63,900
10.	MD – Dermatology, Venereology & Leprosy	₹39,00,000	\$96,800
11.	MD – Radio Diagnosis	₹29,00,000	\$72,000
12.	MD – Pathology	₹14,00,000	\$34,750
13.	MD – Anatomy	₹1,00,000	\$2,500
14.	MD – Physiology	₹1,00,000	\$2,500
15.	MD – Biochemistry	₹1,00,000	\$2,500
16.	MD – Microbiology	₹1,00,000	\$2,500
17.	MD – Pharmacology	₹1,00,000	\$2,500
18.	MD – Community Medicine	₹1,00,000	\$2,500

Notes:

For Open Category Students: • Institute Deposit (Refundable): ₹50,000

For NRI Students: • Administrative Fees (Non-refundable): \$540 • Institute Deposit (Refundable): \$680

I. Payment of Fees

- i. The Fees should be paid by a Demand Draft drawn from a Scheduled Bank in the name of “Symbiosis Medical College for Women” Payable at Pune.

- ii. The candidate shall pay tuition, hostel, mess and other fees for subsequent years, as prescribed by the Symbiosis Medical College for Women & Symbiosis University Hospital and Research Centre/ SIU within the due date as notified from time to time. If the fees are paid after the last date, the candidate will have to pay late fees as per the rules notified by SIU.
- iii. Symbiosis Medical College for Women/ SIU does not charge any Capitation Fee or Donation in any nomenclature or form.
- iv. Fees are subject to change as per guidelines issued by SIU/ GOI/ Supreme Court of India from time to time.
- v. NO CHEQUE PAYMENT OR CASH DEPOSITS will be accepted for payment of Fees.
- vi. Exit after the cut-off date from the programme will attract penalties/ bond obligations as per MCC/ NMC rules, in addition to institutional policies. Candidates will have to pay the remaining years' tuition fees on a pro rata basis. Only then will the relieving letter/ NOC be issued.
- vii. For students admitted in AY 2025–26, tuition fees will remain the same for all 3 years of the PG Programme.

II. **Scholarship for Pre and Para Clinical Courses:** Waiver of academic fees, will be provided for students opting for the following Pre and Para clinical subjects (Details of the fees are given for reference):

Name of Programme	Academic Fees for - 1st Year AY 2025-26 (Amount in ₹)	Institute Deposit (Refundable) (Amount in ₹)
MD – Anatomy	₹ 1,00,000	₹ 50,000
MD – Physiology	₹ 1,00,000	₹ 50,000
MD – Bio Chemistry	₹ 1,00,000	₹ 50,000
MD – Microbiology	₹ 1,00,000	₹ 50,000
MD – Pharmacology	₹ 1,00,000	₹ 50,000
MD – Community Medicine	₹ 1,00,000	₹ 50,000

Additional Notes

- i. The students availing scholarships will be required to pay the initial fees along with the refundable deposit amount at the time of admission. This ₹1.5 lakh will be refunded at the end of 3 years after satisfactory completion of the programme.
- ii. The academic fees will remain the same for the candidate for all 3 years of the PG Program.
- iii. In case of students who are given scholarship the mandatory SR ship period will be for 3 years. In case they choose not to do 3 years' bond, they will have to pay the penalty and the scholarship money awarded (Rs. 10 lakhs plus Rs. 3 lakhs). Students who choose to do a part of 3-year bond but not the full bond period will need to pay Rs. 10 lakhs plus Rs. (3 – no. of years served) lakhs. (Please see section Q ii below for further details).

III. Examination Fees

Examination fees for the postgraduate university examination will be ₹50,000. The same fee applies for all subsequent attempts by unsuccessful candidates. If the candidate does not clear the final examination in first attempt, stipend will cease immediately. Hostel accommodation rights will also cease from the date of declaration of results.

G. Refund Rules/ Policy

- i. If a candidate resigns within the stipulated period, refund will be as per DGHS/ MCC/ NMC/ SIU guidelines.
- ii. If the candidate cancels admission after the stipulated date, the candidate must pay fees for the entire 3 Years programme.

H. Course Details

- i. SMCW & SUHRC offers Post Graduate Broad Specialty Degree programmes leading to the award of Doctor of Medicine (MD) or Master of Surgery (MS) degrees, as notified by the National Medical Commission (NMC) under Annexure-1 of Chapter II of the Post Graduate Medical Education Regulations (PGMER),

2023. These programmes are designed to provide advanced theoretical knowledge, comprehensive clinical training, development of procedural skills, research aptitude, and professional competence in the respective specialties. The courses offered include MD programmes in both pre-clinical, para-clinical and clinical disciplines, and MS programmes in major surgical specialties, will be as per the curriculum declared by the NMC.

- ii. The duration of the MD/MS degree courses is three years, inclusive of the training and examination period, as prescribed under Clause 2.1 of Chapter II of PGMER-2023. All programmes are conducted on a full-time, and enrolled candidates function as Post Graduate Residents throughout the training period.
- iii. The training follows a competency-based curriculum and includes structured academic activities, extensive clinical exposure, and skill-based learning. Post graduate students are required to undertake thesis/research work, maintain a logbook, participate in seminars, journal clubs, teaching of undergraduate students, and complete the District Residency Programme (DRP) as mandated by the NMC. Certification in Research Methodology, Ethics, and Basic and Advanced Cardiac Life Support (BCLS/ACLS) is compulsory during the course.
- iv. All MD/MS post graduate students are required to undergo a mandatory three-month District Residency Programme (DRP) at a designated District Hospital or District Health System, as prescribed by the National Medical Commission (NMC). This posting forms an integral part of the training programme and must be satisfactorily completed to become eligible for the final MD/MS examination.
- v. Assessment of post graduate students is conducted through a combination of formative (continuous internal) assessment and summative university examination, in accordance with NMC regulations. Eligibility for the final examination requires satisfactory performance in internal assessments, certified logbook completion, thesis approval, and mandatory attendance, as prescribed.
- vi. On successful completion of the prescribed duration of training, fulfillment of academic requirements, acceptance of the thesis, and passing the final examinations, candidates will be awarded the MD or MS degree by the Symbiosis International (Deemed University), which is duly recognized by the National Medical Commission.

I. Leave Rules

As per Clause 5.5 of the Post-Graduate Medical Education Regulations, 2023 (PGMER-23), post-graduate students are entitled to a minimum of 20 days of paid casual leave per year, along with one weekly holiday, subject to service exigencies. In addition, students are permitted 5 days of paid academic leave annually. Maternity leave for female students and paternity leave for male students shall be granted in accordance with prevailing Government rules and regulations. The prescribed duration of training shall remain as notified under Chapter II of the Regulations; however, if a student avails leave in excess of the permissible limit, the training period shall be extended by an equivalent duration to ensure completion of the course. Notwithstanding this, a student shall be eligible to appear for the final examination provided a minimum attendance of 80% is fulfilled.:

J. Amenities and Student Services

The University continually enhances its campus environment to ensure an enriching student experience, offering a comprehensive range of services and amenities. These include Student Affairs support, well equipped library services, a robust Learning Management System with online platforms, academic mentoring





and psychological counselling, and dedicated career counselling. Students have access to comfortable hostel accommodation with mess and canteen facilities, high speed Wi Fi, efficient housekeeping, and on campus health care. The campus is secured with 24x7 CCTV surveillance, uninterrupted electricity, and RO drinking water. Recreational and wellness options include a multi gym, sports facilities, and dedicated recreation centres. Additional conveniences such as a shopping complex with supermarkets, cafés, restaurants, salons, travel services, and a pharmacy are available, along with common rooms with TV and indoor games, ATMs, reprography and stationery services, a spa, and laundry facilities.

Useful Links

- 360° Campus Tour: <https://www.siu.edu.in/symbiosis-360-tour.php>
- Biodiversity Measures: <https://www.siu.edu.in/biodiversity.php>
- Sports, Recreation & Wellness: <https://www.siu.edu.in/sports.php>
- Facebook: <https://www.facebook.com/smcwofficial/>
- Instagram: https://www.instagram.com/smcw_official/?hl=en

K. Hostel & Health Checkup

- Twin/ Triple sharing accommodation will be offered to postgraduate students.
- Hostel accommodation & messing is mandatory for all clinical residents.
- Hostel accommodation may be optional for para-clinical residents. However, they must stay on campus during night duty/emergency duty.
- Hostel accommodation is optional for pre-clinical residents.
- Married couples, if both are registered residents of SMCW, will be provided twin sharing accommodation on request. A copy of the marriage certificate must be submitted. Accommodation will be provided as per the availability.
- If any student wants to pay for the full room and stay alone, this is permitted provided they pay the full room cost.

Hostel & Mess Fees (Lavale Hill Base - Medical Campus Only)	Indian Students (₹)	International Students (USD)
Mess Fees (Per Annum) *	₹1,04,000	\$1,290
Hostel Deposit (Refundable)	₹20,000	\$250
Hostel Fees (Per Annum)	As follows	As follows
Twin Sharing	₹2,31,000	\$2,870
Three Sharing	₹1,53,500	\$1,910

Notes

- Hostel and Mess fees may increase up to 15% each year. Government taxes extra as applicable.
- Hostel and Mess Fees for subsequent years will be communicated before the next academic year.

Health Checkup

- All enrolled students must undergo:
 - A pre enrolment medical checkup. For healthcare professionals this will involve mandatory screening for Hepatitis B, Hepatitis C and HIV (Voluntary).
 - An annual health checkup in subsequent years.
- All students will be enrolled in the Group Insurance Scheme (cost included in fees; adjustment done to SCHC).

L. Grievance Redressal

Symbiosis Medical College for Women (SMCW) and Symbiosis University Hospital & Research Centre (SUHRC) follow the Symbiosis International (Deemed University) [Redressal of Grievances of Students] Rules, 2025, framed in accordance with the UGC (Redressal of Grievances of Students) Regulations, 2023. The University is committed to a safe, fair, and student centric environment, supported by a structured, multi-tier grievance redressal mechanism. Students may submit grievances through the online portal, which are addressed by the Campus Student Grievance Redressal Committee (CSGRC), with provision for appeal to the University Student Grievance Redressal Committee (USGRC) and subsequently to the Ombudsperson. The system ensures transparency, natural justice, timely resolution, and protection against discrimination, unfair practices, or academic and administrative lapses, thereby upholding the rights and welfare of every learner.

Symbiosis International (Deemed University) [Redressal of Grievances of Students] Rules, 2025

These rules are framed in consonance with the University Grants Commission (Redressal of Grievances of Students) Regulations, 2023. Symbiosis International (Deemed University) is committed to provide and maintain a conducive learning environment that is unprejudiced, productive and respectful to all. The University has laid down a policy and procedure to redress grievances of students in consonance with University Grants Commission (Redressal of Grievances of Students) Regulations, 2023.

These Rules shall apply to all students who are pursuing a programme of study either through regular mode or online mode, including short-term training programmes in university or seeking admission to be enrolled in any Constituent/ Continuing Education Departments of the University.

The Institution has a well-defined Grievance Redressal Mechanism to address complaints and concerns of students in a fair, transparent, and time-bound manner. The mechanism provides an accessible platform for resolving grievances related to academic matters, administrative issues, infrastructure, or student services. The objective of the Grievance Redressal System is to ensure accountability, protect student interests, and promote trust between the Institution and its stakeholders. All grievances are handled impartially and in accordance with the guidelines prescribed by the University/UGC.

M. Prevention, Prohibition and Redressal of Sexual Harassment

Symbiosis International (Deemed University) [Prevention, Prohibition, and Redressal of Sexual Harassment of Employees and Student in the University and its Constituents Institutes/ Department/ Sections/ Officer/ Workplaces] Rules, 2025

The University is committed to creating its campuses free for discrimination, harassment, retaliation or sexual assault at all levels. To deal with the matter of sexual harassment the University has the mechanism of Internal Committee (IC) and has prepared the Symbiosis International (Deemed University) [Prevention, Prohibition, and Redressal of Sexual Harassment of Employees and Student in the University and its Constituents Institutes/ Department/ Sections/ Officer/ Workplaces] Rules, 2025

The University respects the spirit of equality and upliftment of its employees and students. It has zero tolerance towards gender bias and sexual harassment of employees and students on its campuses. It has a policy in place as per the guidelines/ regulations issued by UGC from time to time. The University is committed to creating its campuses free from discrimination, harassment, retaliation or sexual assault at all levels. To deal with the matters of sexual harassment the University has the mechanism of Internal Committees (IC).

The University Grants Commission (UGC) has notified the regulations for prevention, prohibition and redressal of sexual harassment of women employees and students in higher education institutions regulations, 2015. This regulation has exhaustive provisions for prevention, prohibition and redressal of sexual harassment.

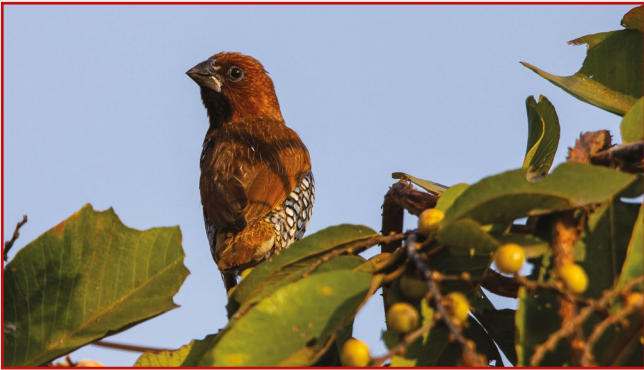
N. Anti-Ragging

- i. All guidelines mandated by statutory bodies, Supreme Court of India, and GoI are strictly implemented and monitored 24x7.
- ii. All students must sign an undertaking to abide by these rules.
- iii. Official Anti Ragging Website: <https://www.antiragging.in/>

Symbiosis International (Deemed University) [Curbing the Menace of Ragging] Rules, 2025

Symbiosis International (Deemed University) is committed to providing a conducive, safe, and secure environment for students across its constituent institutions. Ragging in any form is strictly prohibited within the University and its constituents. Ragging is considered as a criminal offense and the Supreme Court, in its judgement dated 08 May 2009 ordered the implementation of a ragging prevention programme comprising, inter alia, setting up a toll-free anti-ragging helpline/ call centre, a database of institutions/ students, and engaging an independent non-government agency as the monitoring agency.

The University has zero tolerance towards any form of ragging in its campuses and in order to curb the menace of ragging and fostering a conducive and amiable atmosphere, the University had prepared and notified its Anti-Ragging Rules, 2025, based on the UGC Regulations. At the time of admission, students and their parent(s) are required to sign a declaration in the prescribed format. Upon admission, each student will submit an undertaking/ declaration to the authority of the University and its designated officials, who are vested with the power to enforce discipline under the University's rules.



O. Discipline

Symbiosis International (Deemed University) Code of Conduct [Misconducts, Inquiry Procedure] Rules, 2023

The Code of Conduct under these rules has been framed to foster and protect the core missions of the University, the scholarly and civic development of the students in a safe and secure learning environment, and to protect people, properties and processes that support the University and its missions. The establishment and maintenance of a community where there is freedom to teach and to learn is dependent on maintaining an appropriate sense of order that allows for the pursuit of objectives of the University in an environment that is both safe and free of invidious disruption.

Any disturbance on account of student indiscipline impacts the harmony on the premises of the institute which is why institutes formulate Code of Conduct and lay down just and fair policies to inquire and decide with violation of Code of Conduct by students on its premises. It is binding upon any student, who seeks admission, to comply with the requirements of the Code of Conduct.

The purpose of the Code of Conduct is to define limits of acceptable student conduct and defining violations thereof, as misconducts. Further, it lays down the disciplinary proceedings at the University within the applicable laws of the land ensuring that the actions taken are in pursuance of the same. However, the Code reserves the right of the University to take necessary disciplinary actions against the alleged delinquent in the event of him/ her having been found guilty or convicted by the appropriate authority under the law to which s/he is subjected.

P. Caution Notice

- i. Admission to MD/MS Programmes at SMCW/SIU is strictly merit based as per NMC/DGHS/MCC/SIU criteria.
- ii. Some individuals/ organisations falsely claim they can secure admission to SIU and charge fees. SIU has not authorised any individual/agency for admissions. SIU does not charge capitation fees.
- iii. Any aspirant/parent engaging with such agents does so at their own risk. Any candidate approaching SIU through such agents will be permanently debarred from all SIU programmes.

Q. Undertaking and Bond

i. Payment of Fees Bond (Student and Parent)

Candidates whose admission has been confirmed to the Postgraduate Programme shall submit an Undertaking in the form of Bond amounting to Rs.500/- towards Academic Fees of subsequent Years. In case, the student cancel/ discontinue the Postgraduate Programme, the student shall deposit Academic Fees of subsequent Years to obtain the NOC.

At any stage, if it is revealed that the student has obtained admission by way of misrepresentation, submission of fraudulent/ forged documents or by way of unfair means, etc., his/ her admission shall be cancelled forth with and he/she shall be liable to pay Academic Fees of remaining Years of Postgraduate Programme. The University shall proceed with action in accordance with Rules/ Regulations/ Law in such cases.

ii. Service Bond (Student)

- i. Every candidate after obtaining the post graduate degree will have to serve compulsorily for 1 year as a Senior Resident in his/her department. Every candidate shall submit an Undertaking in the form of Bond amounting to Rs.500/- that after obtaining the post graduate degree will have to serve compulsorily for 1 year as a Senior Resident in his/ her department. In case the student chooses not to continue as Senior Resident, he/ she has to pay a bond penalty of Rs.10 lakhs.
- ii. In case of students who are given scholarship the mandatory SR ship period will be for 3 years. In case they choose not to do 3 years' bond, they will have to pay the penalty and the scholarship money awarded (Rs. 10 lakhs plus Rs. 3 lakhs). Students who choose to do a part of 3-year bond but not the full bond period will need to pay Rs. 10 lakhs plus Rs. (3 – no. of years served) lakhs.
- iii. The Payment of Academic Fees and Service Bond Formats attached as Annexure 2, 3, 4 respectively.



Annexure 1: Medical Fitness Certificate

(This certificate will be required to be on the letterhead & signed by a registered medical practitioner holding a degree not below that of M.B.B.S.)

(TO BE SUBMITTED AT THE TIME OF ADMISSION)

I certify that I have carefully examined Mr./ Ms.....son/ daughter of Shri/ Smt..... of Age.....years whose signature is given below. Based on the examination, I certify that she is in good physical and mental health, and is free from any physical disabilities which may interfere with her studies including the active outdoor duties required to be undergone during the M.D./ M.S. course.

Marks of Identification: 1)

2)

Name of Candidate:

Signature of the Candidate:

Address of the candidate:

Signature of Parent:

Place:

Date:

Name & Signature of the Registered Medical Practitioner (RMP) with seal and registration number:

Address of the RMP:

Place:

Date:



Annexure 2:

Declarations and Bonds to be furnished by student

Bond to pay the fees for A.Y. 2025-26, including subsequent Year(s)/ Semester(s) as prescribed from time to time
(To be signed by all candidates admitted to the MD/MS Programme with SMCW & SUHRC)

I, Dr. _____, Age: _____, Address: _____
_____, having been admitted to the MD/MS Programme with Symbiosis Medical College for Women & Symbiosis University Hospital and Research Centre (SMCW & SUHRC), a Constituent of Symbiosis International [Deemed University], do hereby declare and undertake by this Bond as under:

1. I have taken a conscious decision to pursue the MD/MS Programme at Symbiosis Medical College for Women & Symbiosis University Hospital and Research Centre ["SMCW & SUHRC"], a Constituent of Symbiosis International [Deemed University], after reading and understanding all the applicable Rules and Regulations.
2. I have paid the Academic, Administrative, Hostel and Mess Fees, including Institute and Hostel Deposit at the time of admission, and undertake to pay the fees for subsequent Year(s)/ Semester(s) as prescribed from time to time.
3. I undertake that in case I cancel/ discontinue/ withdraw admission to the MD/MS Programme after the cut-off date, I shall deposit the Academic Fees of subsequent Year(s)/ Semester(s) to obtain the NOC from SMCW/ SUHRC/ SIU.
4. I undertake to pay all my fees to Symbiosis Medical College for Women & Symbiosis University Hospital and Research Centre through banking channels only and NOT IN CASH.
5. I understand that Hostel/ Mess Fees of subsequent Year(s)/ Semester(s) shall also increase by 10% on a yearly basis, and I undertake to pay the revised Hostel/ Mess Fees as prescribed from time to time.
6. I understand that University examination fees are levied separately. The examination fees are not part of academic tuition fees and are to be paid after a student attains eligibility to appear for the University examination.
7. I undertake to pay the Repeater/ Backlog examination fees as prescribed and revised from time to time.
8. I undertake to serve Senior Residency (SRship) at SUHRC after obtaining the post-graduate degree. In case I choose not to do so, I will pay a bond penalty of Rs. 10 lakhs. In case I receive a scholarship, the mandatory SRship period will be 3 years, and if I choose not to complete the 3-year bond, I will pay the penalty and the scholarship amount awarded (Rs. 10 lakhs plus Rs. 3 lakhs). If I choose to complete only a part of the 3-year bond/ SRship but not the full period, I will need to pay Rs. 10 lakhs plus Rs. 3 lakhs minus the number of years served.
9. I understand that government taxes would be additional as and when applicable and I undertake to pay them as and when required.
10. I understand that the College has relied upon documents submitted by me to grant provisional admission and undertake that I have submitted true and genuine documents to ascertain eligibility for provisional admission. I am solely responsible for the consequences of false information, falsified/ fraudulent/ forged documents etc., and am aware that it will amount to cancellation of admission, including legal consequences.
11. I undertake to abide by the Refund Rules as prescribed by the DGHS/ MCC/ NMC/ SIU.
12. I undertake to abide by the guidelines/ rules/ regulations pertaining to admission, academics, clinical postings, duties at SMCW & SUHRC, examination, anti-ragging, anti-discrimination and anti-sexual harassment, including code of conduct in accordance with NMC/ SIU/ SMCW & SUHRC norms.
13. I undertake that I have adequate financial resources to pay my fees regularly as required. I understand and undertake that reasons like inability to obtain a loan, loss in business, loss of employment, and other such reasons will not be offered by me for not paying the prescribed fees.

Place: _____ Date: _____

Candidate's Name & Signature: _____

Parent's/ Guardian's Name & Signature: _____

Annexure 3: Declarations and Bonds to be furnished by Parent (On Rs. 500/- stamp paper)

Bond to pay the fees for A.Y. 2025-26, including subsequent Year(s)/ Semester(s) as prescribed from time to time (To be signed by parents of all candidates admitted to the MD/MS Programme with SMCW & SUHRC)

To pay the fees for A.Y. 2025 26, including subsequent Year(s)/Semester(s) as prescribed from time to time

I, _____, Age: _____, Address: _____
_____, having my ward admitted to the MD/MS Postgraduate Programme at Symbiosis Medical College for Women (SMCW) & undergoing training at Symbiosis University Hospital and Research Centre (SUHRC), do hereby declare and undertake by this Bond as under:

1. I know that my ward Dr. _____ has secured admission to pursue the MD/MS postgraduate programme at Symbiosis Medical College for Women [“SMCW”], a Constituent of Symbiosis International [Deemed University] (“SIU”).
2. I have read the prospectus of the MD/MS programme at SMCW carefully and understood all the applicable Rules and Regulations prescribed by NMC / MCC / SIU / SMCW & SUHRC, including those relating to academics, training, discipline, and fees.
3. I have read the contents of the undertaking given by Dr. _____, which he/she has read and signed in my presence.
4. I have in particular read and understood the bond / undertaking regarding the payment of remaining fees, in the event of withdrawal of admission by my son/daughter/ward under any of the circumstances mentioned therein, including:
 - a. voluntary withdrawal;
 - b. withdrawal on account of disciplinary action;
 - c. withdrawal on account of submission of false/forged documents; d] any other circumstances as prescribed by SMCW / SIU / Symbiosis.
5. I understand that SMCW & SUHRC / SIU / Symbiosis has the right to recover the remaining fees under all/any such circumstances.
5. I undertake to SMCW & SUHRC / SIU / Symbiosis that I shall be jointly and/or severally liable to pay the amount of the remaining fees, as then payable, on demand, at the time of withdrawal of admission. I also agree that in case I fail to pay the remaining fees on demand, then SMCW & SUHRC / SIU will be entitled to take any appropriate legal and/or administrative action jointly and/or severally against me and my son/daughter/ward.
5. I further agree and undertake that the undertaking/declaration given by Dr. _____ and by me is irrevocable and shall remain in full force and effect until the payment of all remaining fees, and that SMCW & SUHRC / SIU / Symbiosis would be fully authorised to take any lawful action for realisation/ recovery of the amount of the remaining fees.

Place: _____ Date: _____

Parent's / Guardian's Name:

Signature:

Annexure 4: Undertaking & Service Bond by Student (On Rs. 500/- stamp paper)

INDEMNITY BOND

Name of the Student: _____

Admission year: _____

Indemnity Bond to be executed for the purpose of compulsory service to the SMCW & SUHRC/SIU after completion of MD/MS/Post-graduate medical degree course by a student, admitted to the MD/MS/Post-graduate medical degree course, with two sureties.

Know all men by these present that Symbiosis Medical College for Women Pune informed to student and father and guardian of student:

Name of the Student _____

jointly and each of us severally held and firmly bound by the SMCW & SUHRC/SIU exercising the execution referred to as the SMCW & SUHRC/SIU in the sum of Rs. 10,00,000/- (Rupees Ten Lakhs only), being the prescribed bond penalty amount as per SMCW & SUHRC/SIU policy, together with interest (as specified below). I do hereby jointly and each of us severally firmly bind ourselves, our sureties, our respective heirs, executors, administrators and legal representative by these presents.

Name:

Date:

Signature:

Place:

Whereas the Symbiosis Medical College for Women Pune runs MD/MS/Post-graduate medical degree courses, every student admitted shall complete the MD/MS/Post-graduate medical degree course and there after duly complete prescribed one-year bond service as Senior Resident/Assistant Professor. He/She will be required to serve the SMCW & SUHRC/SIU for one year.

Whereas, the SMCW is a Medical College run by the SIU, which is a Deemed University. SIU is also running a hospital (SUHRC) providing primary, secondary & tertiary line of treatment.

Therefore, SMCW makes it mandatory to serve the SMCW & SUHRC for minimum one year after obtaining PG degree. This service will provide a great opportunity to all the post-graduates to improve their teaching, clinical and research skills.

Terms and Conditions of the Indemnity Bond

It is hereby agreed as follows.

First Party: - Symbiosis Medical College and attached
- Symbiosis University Hospital and Research Centre.
Both are constituents of
- Symbiosis International Deemed to be University, Lavale, Pune.

Second Party: Name of the Student: _____
- Year of MD/MS admission _____
- Address _____

SMCW – MD/MS – Bond Service

Clauses of Bond – 2025 MD/MS Admission Batch.

1. I will serve the SMCW & SUHRC for minimum one year after completion of MD/MS degree course.
2. If, I am planning to appear for NEET Super speciality examination conducted by NTA/GoI for doing DM/MCh/DNB/Super speciality courses, then I will complete the bond service after completion of my super specialization.
3. If, I appear for super speciality common entrance test NEET first time and do not get a super speciality seat of my choice (subject or institution), then I will again appear for super speciality entrance test in the subsequent year.
4. If, I do not get a super speciality seat of my choice in spite of two attempts, I will complete the SMCW & SUHRC bond service of one year and then will appear for the third time.
5. If, I want to appear for NEET super speciality entrance examination third time, then it will be only after getting Bond free certificate from the Dean SMCW & SUHRC.
6. I will not take more than a 2 calendar years to complete my two attempts of NEET super speciality entrance examination. If, I fail to appear in the calendar year subsequent to my first NEET super speciality attempt, then I will complete the Bond service before appearing for second attempt in NEET super speciality examination.
7. After completion of my super specialization (obtaining DM/MCh/DMB/Super Speciality degree), I will complete my PG bonded service immediately. I will not ask relaxation for doing fellowship, specialization, certificate course, observership etc.
8. If, I get a Super speciality (DM/M.Ch./DNB Super speciality) seat, either after 1st attempt or after 2nd attempt, then I will complete the bond service after the completion of superspeciality degree.
9. If, I want to appear for any degree/ diploma/ fellowship/ certificate course/ advance course/ specialized training or any other academic/administrative training or government service, then I will first complete the bond service before joining to any such courses/service.
10. I will complete my bond service for 365 days. I will take official approved leave with prior permission as per SMCW service rules. I assure that my total days during bond service period will be minimum 350 days.
11. I will not take any leave without pay or medical leave during this period. If such a leave is approved, then this period will not be counted in 350 bond service days and I understand that the bond period will be extended accordingly.

12. If, I am entitled for the maternity leave, then this period will also be not counted in 350 bond service days and I understand that the bond period will be extended accordingly.
13. If, I want an exemption from the bond service, then I will pay bond penalty amount of Rs. 10 Lakhs only as bond penalty amount in one installment.
14. If approved by the higher authority, I undertake to pay the bond penalty amount in installments subject to approval by the competent authority, then I know that I will get the bond free certificate only after paying last installment, with interest as per clause no. 16 given below.
15. My eligibility for joining the bond service will be as follows.
 - a. Within one month after obtaining MD/MS/DNB/Super speciality degree. If postponed for valid reason, then-
 - b. Within one month after the result of DM/MCh/DNB/Super speciality.
16. Interest will be calculated on these (delayed) days on the capital equal to Rs. 10 Lakhs only with 10% interest rate. Delay period is equal to number of days from the day of eligibility to join and the date of actual joining.
17. After completion of Bond service, the bond free certificate will be issued only after the payment of interest for late joining in the bond service.
18. If a candidate is making a payment of Rs. 10 Lakhs only then the interest will be calculated from the date of eligibility (as per clause no. 16 above) to join the service to the date of payment.
19. During bond service, I will work as S.R. / M.O/ CMO/ RMO/ DMO or any other post assigned by the Dean. My designation may not be same during bond service. My designation will be Assistant Professor after super specialization.
20. The stipend paid to me will be as per the SIU/SMCW & SUHRC rules. During Assistant Professorship, I will get salary.
21. I am liable for transfer from SMCW & SUHRC/UHTC/RHTC or any other place decided by the Dean.
22. If the institution is unable to post me in the department of my super-specialization as Assistant Professor for bonded service, then I am aware that, I will be posted as SR/Assistant Professor in the department of my broad specialization.
23. This bonded service will be as per the requirement of the SMCW & SUHRC. In certain cases, the Dean has the authority to issue a bond free certificate without completion or after partial completion of the service as per the need of the SMCW & SUHRC. In such a situation a student will not have a right to claim for the service.
24. After obtaining MD/MS degree a student will apply to the Dean SMCW for a bonded service. A student will keep a proof of an application received (not sent) by the Dean office. If a bonded service is not allotted by the Dean within 6 months from the date of his/her application, then automatically he/she will be treated as bond free.
25. If the student before or after entering in to the bond service, becomes ineligible for appointment or continuation in the service by his/her own behavior, he/she render himself/herself liable to pay the bond amount or the amount will be recovered from the parents/ guardians /sureties.
26. The Candidate hereby undertakes that, in the event they are required to serve a compulsory bond service with the Central/State Government pursuant to the undergraduate (UG) bond executed with the said Government, they shall duly fulfill such obligation provided they wish so and obtain a formal "Bond Free" certificate from the competent authority of the Central/State Government.
27. The Candidate further agrees that only upon receipt of such "Bond Free" certificate, they shall commence the bond service obligation under this Postgraduate (PG) bond with the SMCW & SUHRC/SIU. The Candidate shall promptly submit a copy of the said certificate to the College as proof of release from prior bond obligations. Failure to comply with this condition shall constitute a breach of the terms of this PG bond.

Signed and delivered by

IN WITNESS WHERE OF THE ABOVE NAMED

Name of the Student _____

Address _____

SURETIES

1 Name _____
Address _____

2 Name _____
Address _____

WITNESS

1 Name _____
Address _____

2 Name _____
Address _____

(Attach Aadhaar Card and residence proof of the candidate, parents, guardians, sureties and witnesses)





In its Golden Jubilee year, Symbiosis established the '*Symbiosis Aarogya Dham*' over 70 acres of land at the Symbiosis International (Deemed University) Campus at Lavale, Pune. The Aarogya Dham consists of all the institutions and related departments and research centres under the Faculty of Medical and Health Sciences, all under the ambit of Symbiosis International (Deemed University).



For further details, please contact:

Telephone

+91-20-6193 0271	+91-20-2810 0016
+91-20-6193 0272	+91-20-2810 0017
+91-20-6193 0273	+91-20-2810 0018
+91-20-6193 0274	+91-20-2810 0019
+91-20-6193 0275	+91-20-2810 0020

WhatsApp: +91-73501 83183



For MD/MS admission and other details scan or
visit: www.smcw.edu.in

E-mail: admissions@smcw.siu.edu.in

॥ वसुधैव कुटुम्बकम् ॥

The world is one family